


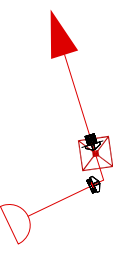
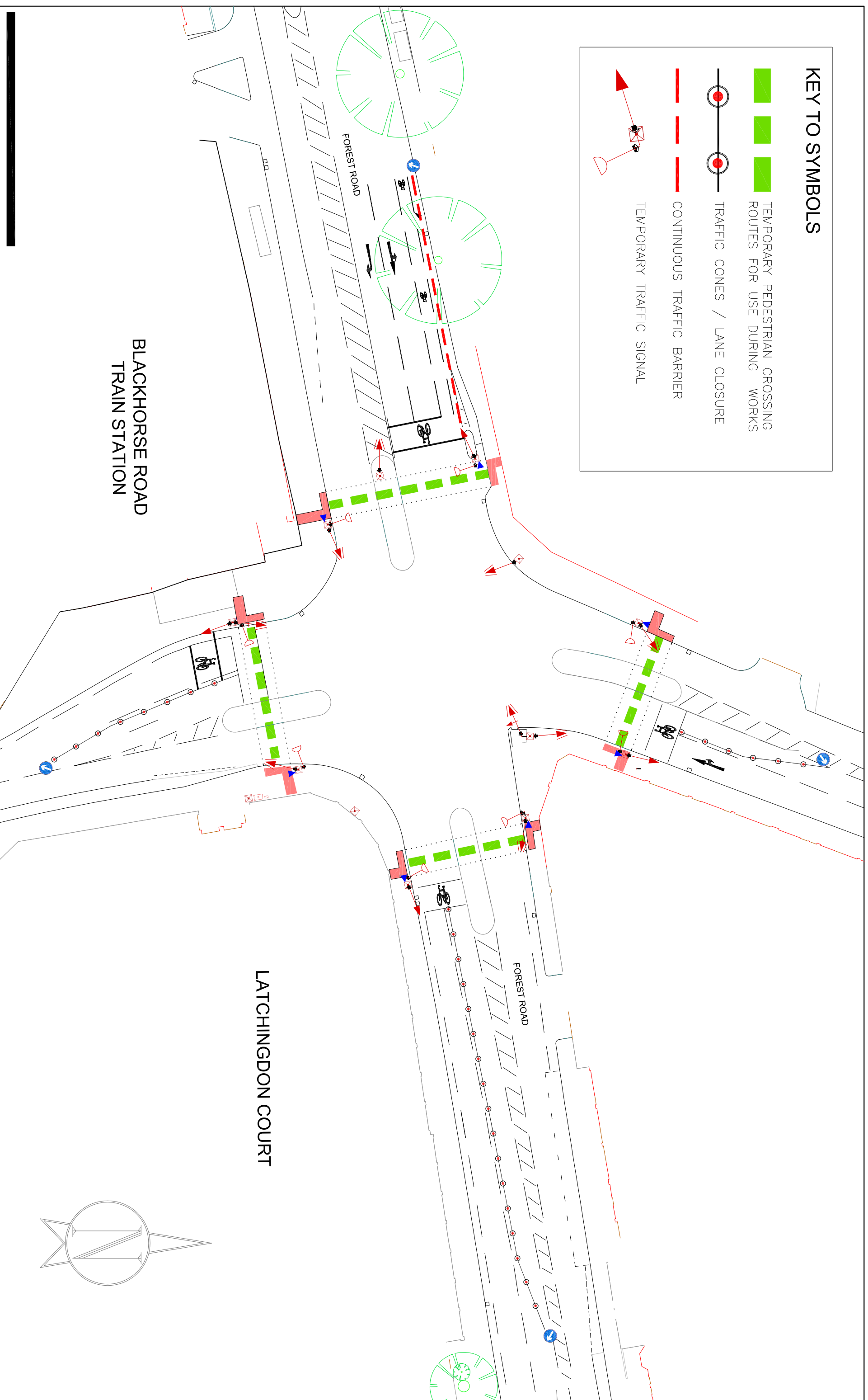


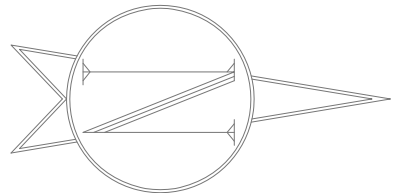
# KEY TO SYMBOLS

-  TEMPORARY PEDESTRIAN CROSSING ROUTES FOR USE DURING WORKS
-  TRAFFIC CONES / LANE CLOSURE
-  CONTINUOUS TRAFFIC BARRIER
-  TEMPORARY TRAFFIC SIGNAL



BLACKHORSE ROAD  
TRAIN STATION

LATCHINGDON COURT



Drawn By	RP
Drawing No.	FRBHR/TL1
Date	JUN 2019
Scale	NTS

The  
**FOREST ROAD BLACKHORSE ROAD  
HIGHWAY IMPROVEMENT SCHEME**

Notes  
**INITIAL TEMPORARY LAYOUT - CONTROLLED PEDESTRIAN CROSSING  
POINTS AND LANE CLOSURES - OPERATIONAL 27 JUNE**

