

# Stay Safe WF

## Be aware of scams

If you test positive with Covid-19 or have been in contact with someone who has you may be contacted by NHS Test and Trace.



### How will they contact you?

- Any text or email from NHS Test and Trace will ask you to sign into <http://contact-tracing.phe.gov.uk>
- All phone calls will come from 0300 013 5000
- You will never be called late at night, only between 9am -5pm
- The NHS service is called NHS Test and Trace - if someone claims to be from NHS Track and Trace do not continue the call



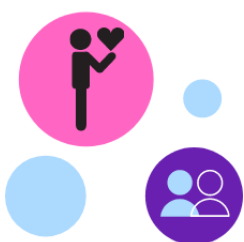
### What you will be asked:

You'll be asked to isolate for 14 days

You will only be asked to go for a test if you develop or have symptoms

### What you won't be asked:

- For bank details or payment
- For details of your accounts
- To set up a password or pin
- To call a premium rate number
- For someone to visit your home



**STAY SAFE  
CHAMPIONS**  
HELPING KEEP WALTHAM FOREST  
SAFE



**Waltham Forest**