

Church Road

In 2014, Waltham Forest Council was awarded £27million by Transport for London for the Mini-Holland Programme to improve the borough's roads and town centres making them great places to live, work and travel around.

The Church Road scheme forms part of the Mini-Holland Leyton to Blackhorse Road cycling and walking route, providing good links to Lea Bridge Road, Orient Way and Ruckholt Road E10.

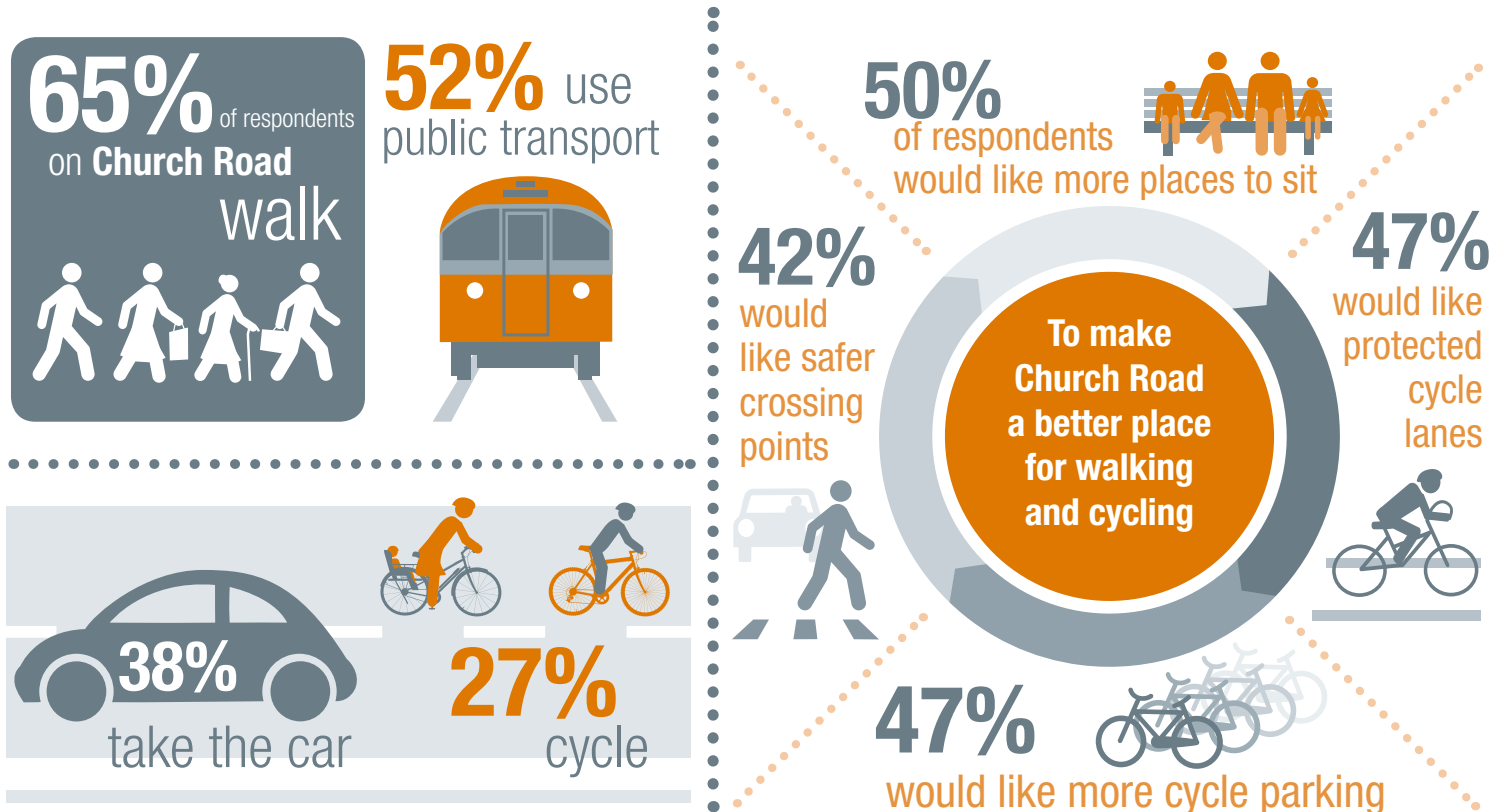
Church Road runs between Lea Bridge Road and High Road Leyton in the south of the borough and is used by up to 12,000 vehicles and 150 cyclists daily. The full Leyton to Blackhorse Road cycling and walking route will benefit from

changes to strengthen connections between areas in the borough, making the roads safer and easier to navigate for all road users.

Between 17 March and 7 April 2015, we conducted surveys with residents and businesses to find out what local people think about the area and the type of improvements they would like to see. The survey was online and over 3,400 surveys hand delivered to all households in the area. Over 140 people and 70 businesses responded and provided comments on specific places in the area.

The results from the perception surveys have been used to inform the design for the Church Road scheme.

The headline results from the survey are below:



56% of respondents feel that some areas on Church Road are unattractive



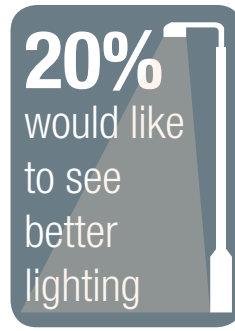
51% say the area feels like a community

51% say some areas don't feel safe

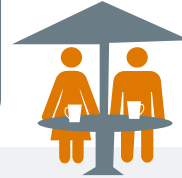
40% of Church Road businesses said they would like to see a better retail, business and service mix



20% would like to see better lighting



20% improved public spaces



20% better crossing points



60% of businesses on Church Road think their customers arrive by car



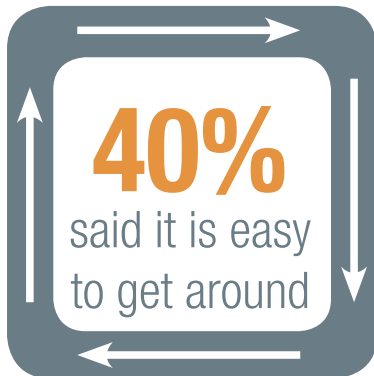
whilst **20%** think they arrive by foot



20% think they use public transport and **13%** think their customers cycle



47% of businesses on Church Road said that some areas feel safe



40% said it is easy to get around

47% said "business could be better"



33% said some areas are unattractive



33% said business is flourishing

For more information on this scheme and the Mini-Holland Programme visit www.enjoywalthamforest.co.uk.