



Vhm
Vestry House Museum
WALTHAM FOREST
Wednesday-Sunday, 11am-5pm
Free entry
Tel: 020 8456 4391
Email: vhm@walthamforest.gov.uk
www.walthamforest.gov.uk/vestry-house
Waltham Forest Council is an Equal Opportunity Employer

www.vestryhousemuseum.org.uk

X @vestryhouse

f @vestryhouse

ig vestryhousemuseum

Vhm
Vestry House Museum



Vestry House Museum

OPERATOR BROCHURE

*Heritage in the Making,
since 1730*



VISION

Vestry House Museum is a welcoming, heritage destination and community garden, where you can find a place to work, rest and discover the rich stories of Waltham Forest and its people.

VESTRY HOUSE MUSEUM

Waltham Forest Council is seeking to revitalise Vestry House Museum as an accessible, diverse and inclusive heritage destination, that reflects the residents of Waltham Forest. The Grade II listed building will be fully refurbished with investment from the Council and Levelling Up funding with works anticipated for completion in 2025. Creating a multi-use site that increases access to culture, skills and education for young people and residents, we want Vestry House Museum to be more financially and environmentally sustainable, securing its impact for future generations.

EXPERIENCED OPERATOR

The council is looking for an experienced operator to take over the running of the revitalised Vestry House Museum, focussing on a local heritage and culture offer to include creative workspace, a cafe, community programmes, learning and engagement activities with income generating opportunities such as venue hire. The operating organisation - which could be a single organisation, consortium or partnership - will be responsible for animating and activating Vestry House Museum and garden with a range of community programmes combined with income-generating events and activities.

A REVITALISED OFFER

- ▷ A fully inclusive cultural and heritage offer, attracting people from diverse backgrounds, delivering 150 free cultural events a year, attracting 80,000 visitors.
- ▷ A multi-use site that includes the heritage of the borough and the site at its core
- ▷ An enhanced employment, education and skills offer for local young people, including 60 school visits and employment/training opportunities for 60 young people each year.
- ▷ Increased environmental sustainability and reduced carbon footprint across the building and its operations.
- ▷ Increased accessibility of the building and garden
- ▷ A new operational model that through the combination of workspace, culture and heritage improves the financial sustainability of Vestry House Museum securing it for future generations.

To register your interest, please get in touch:

bisi.oyekanmi@walthamforest.gov.uk

Head of Commercial, Culture and Destinations

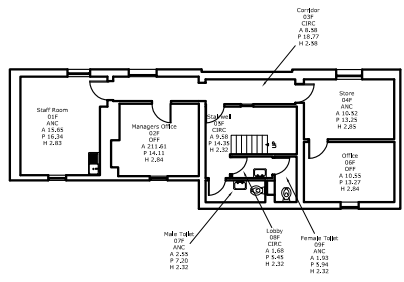
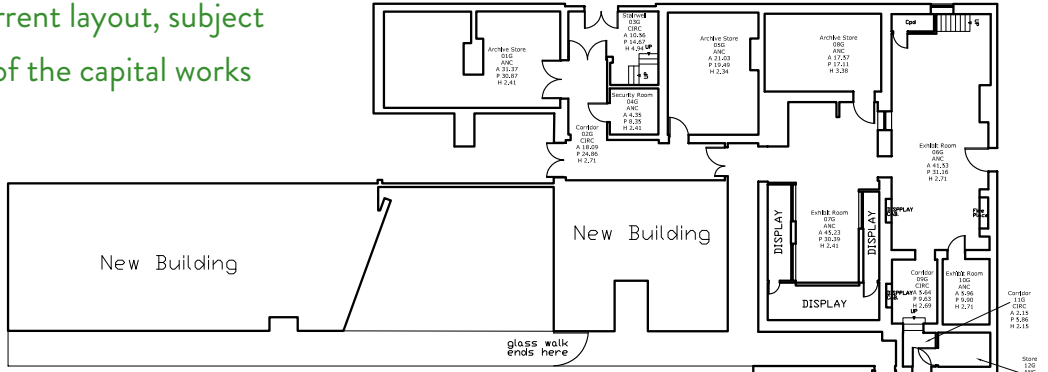
Photography: All courtesy of Vestry House Museum except third from right: Abel Holsborough, Small Things are Possible, installation at Vestry House Museum commissioned as part of the William Morris Gallery's Radical Landscapes programme.



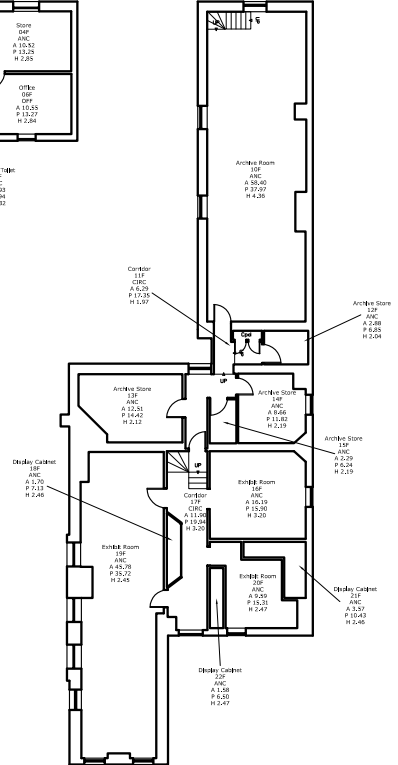


Plans show the current layout, subject to change as part of the capital works

Ground Floor



1st floor



Dimensions: NIA (m2):
 1st floor: 232;
 G floor: 368;
 Garden: 1,423

Isometric sketch by Studio Weave

