

# Wadley Road

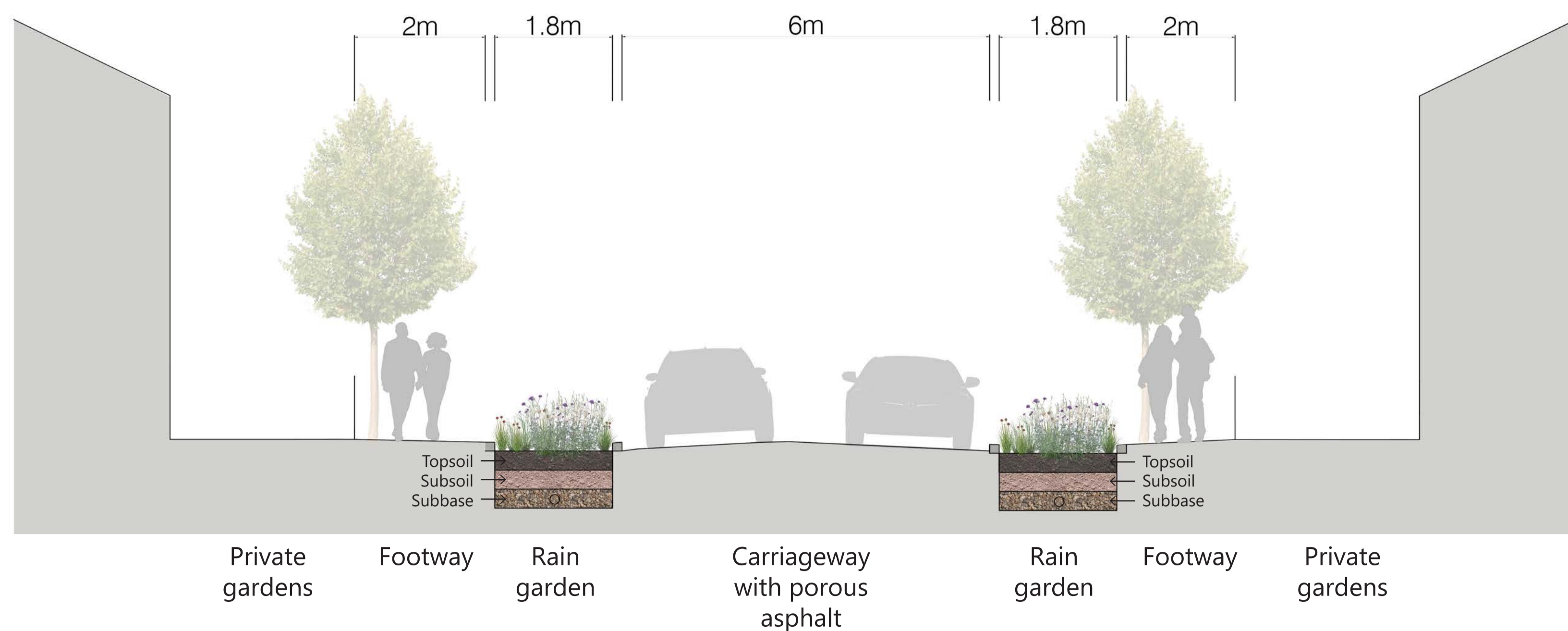
## Flood Mitigation Project



PROJECT CENTRE

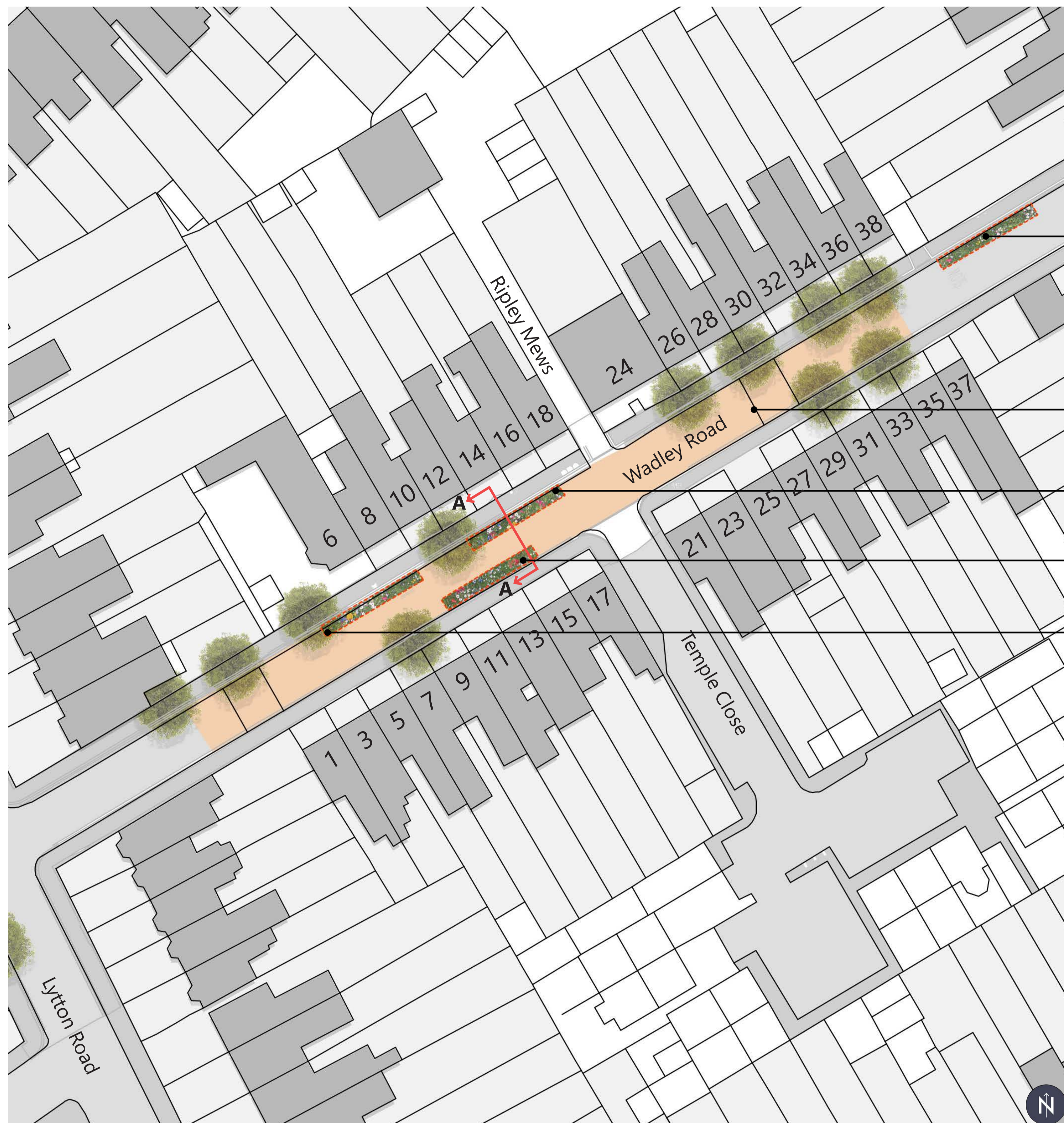
### TYPICAL CROSS SECTION A-A

All dimensions are indicative only and can vary



### SITE LOCATION PLAN

All trees are existing and to be retained



- Proposed rain garden reduction of 3 parking spaces
- Porous asphalt
- Proposed rain garden reduction of 3 parking spaces
- Proposed rain garden reduction of 3 parking spaces
- Proposed rain garden reduction of 3 parking spaces

### OVERALL LOCATION PLAN



### TYPICAL IMAGES OF RAIN GARDEN SCHEMES



Typical porous asphalt and rain garden



Typical rain garden



Typical rain garden and edging

### PLANTING PALETTE



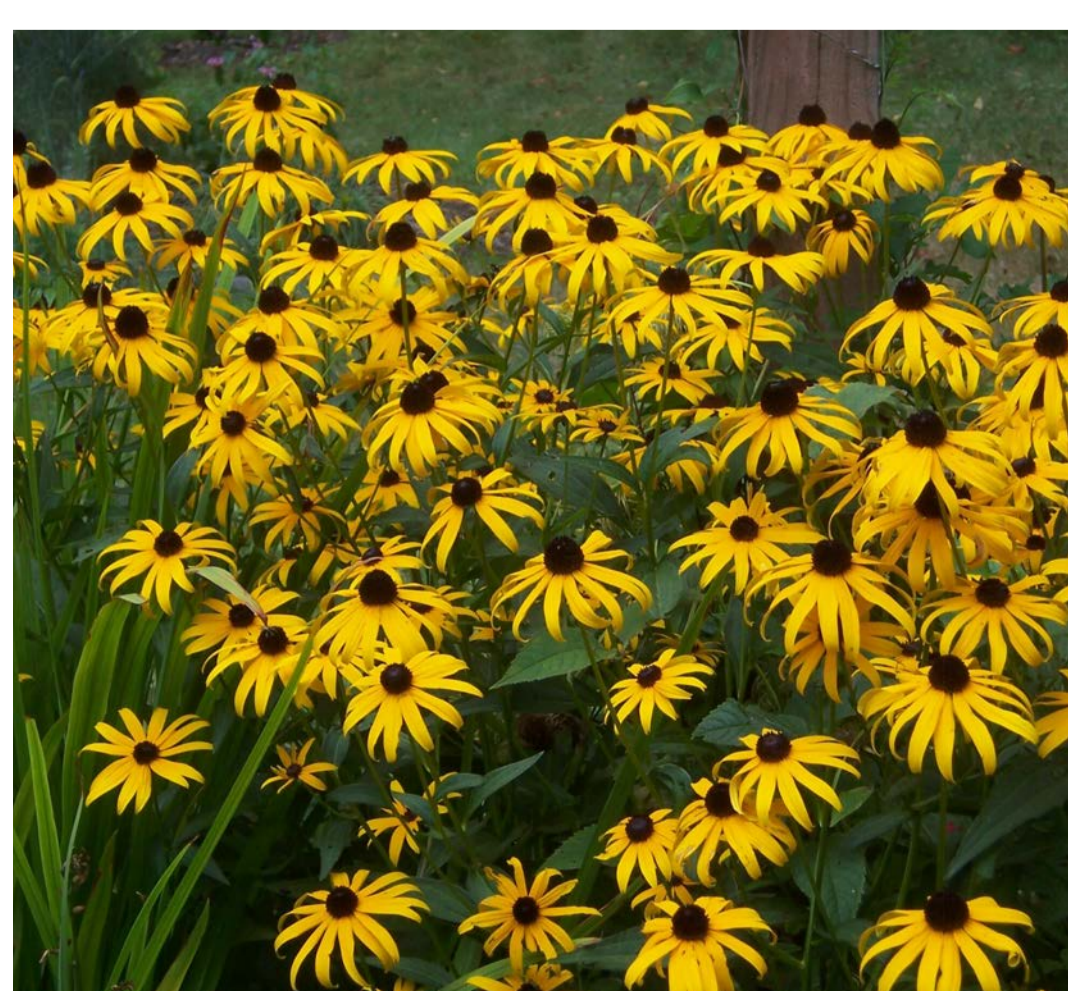
Allium - Drumstick Allium



Geranium - Meadow Crainsbill



Perovskia - Russian sage



Rudbeckia hirta - Black-eyed susan



Salvia 'Skyscraper'



Stipa tenuissima - Fan grass

# Esther Road

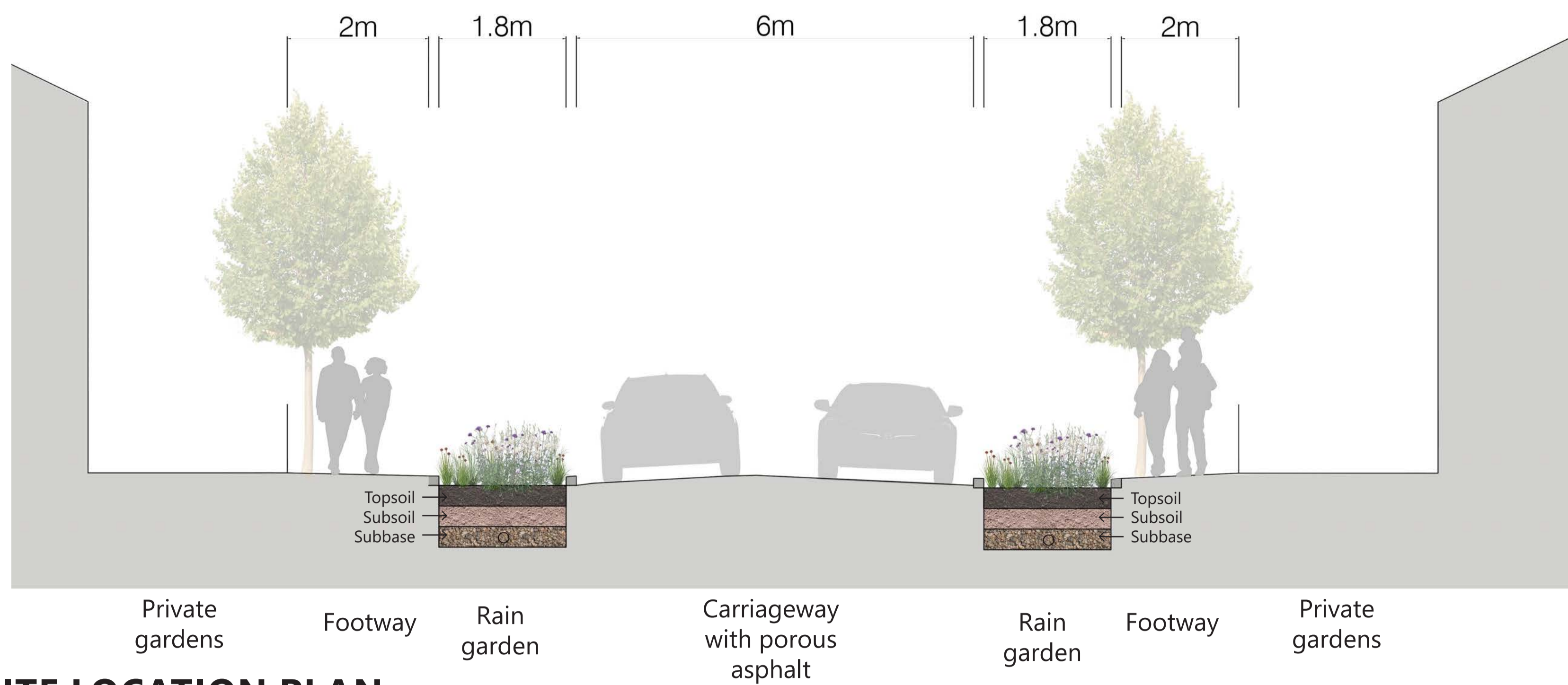
## Flood Mitigation Project



**PROJECT CENTRE**

### TYPICAL CROSS SECTION B-B

All dimensions are indicative only and can vary



### SITE LOCATION PLAN

All trees are existing and to be retained



- Porous asphalt
- Proposed rain garden reduction of 4 parking spaces
- Proposed rain garden reduction of 4 parking spaces
- Proposed rain garden reduction of 1 parking space

### OVERALL LOCATION PLAN



### TYPICAL IMAGES OF RAIN GARDEN SCHEMES



Community engagement planting rain garden

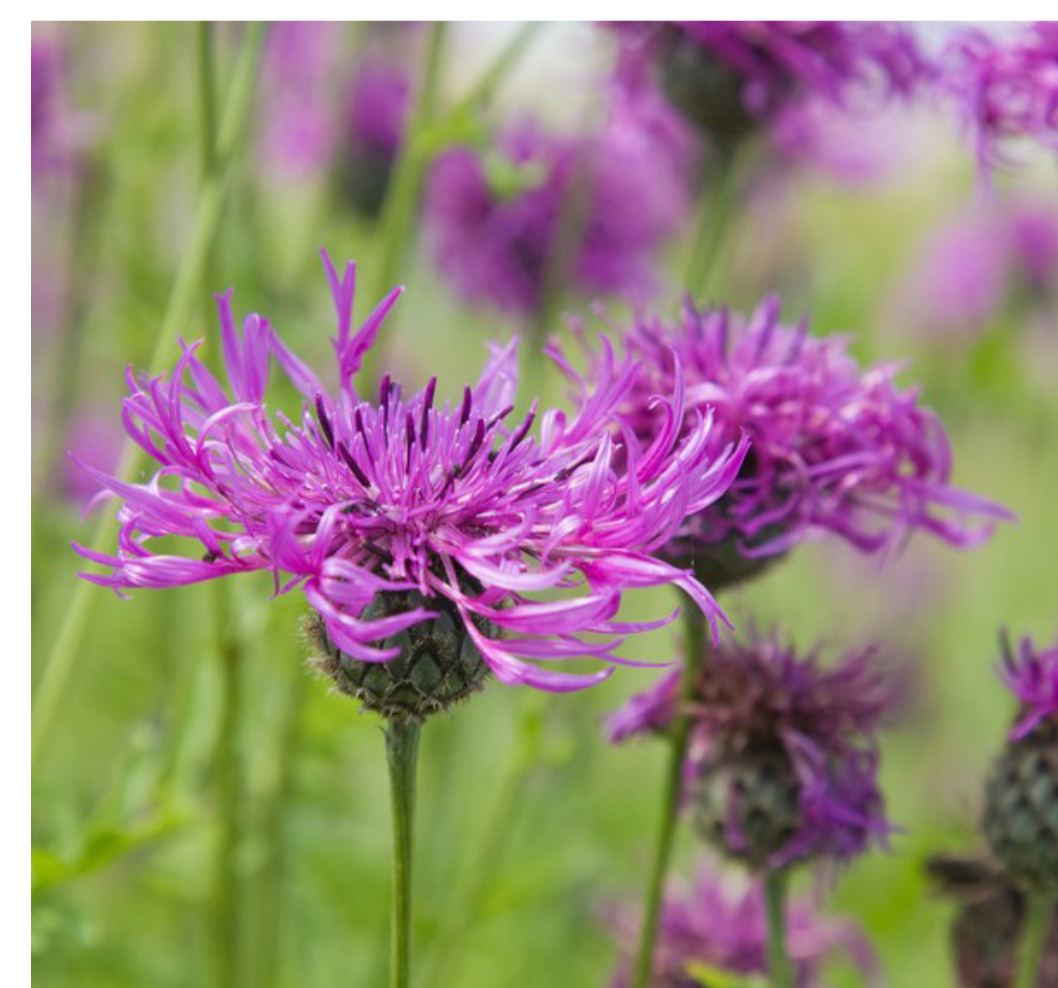
### PLANTING PALETTE



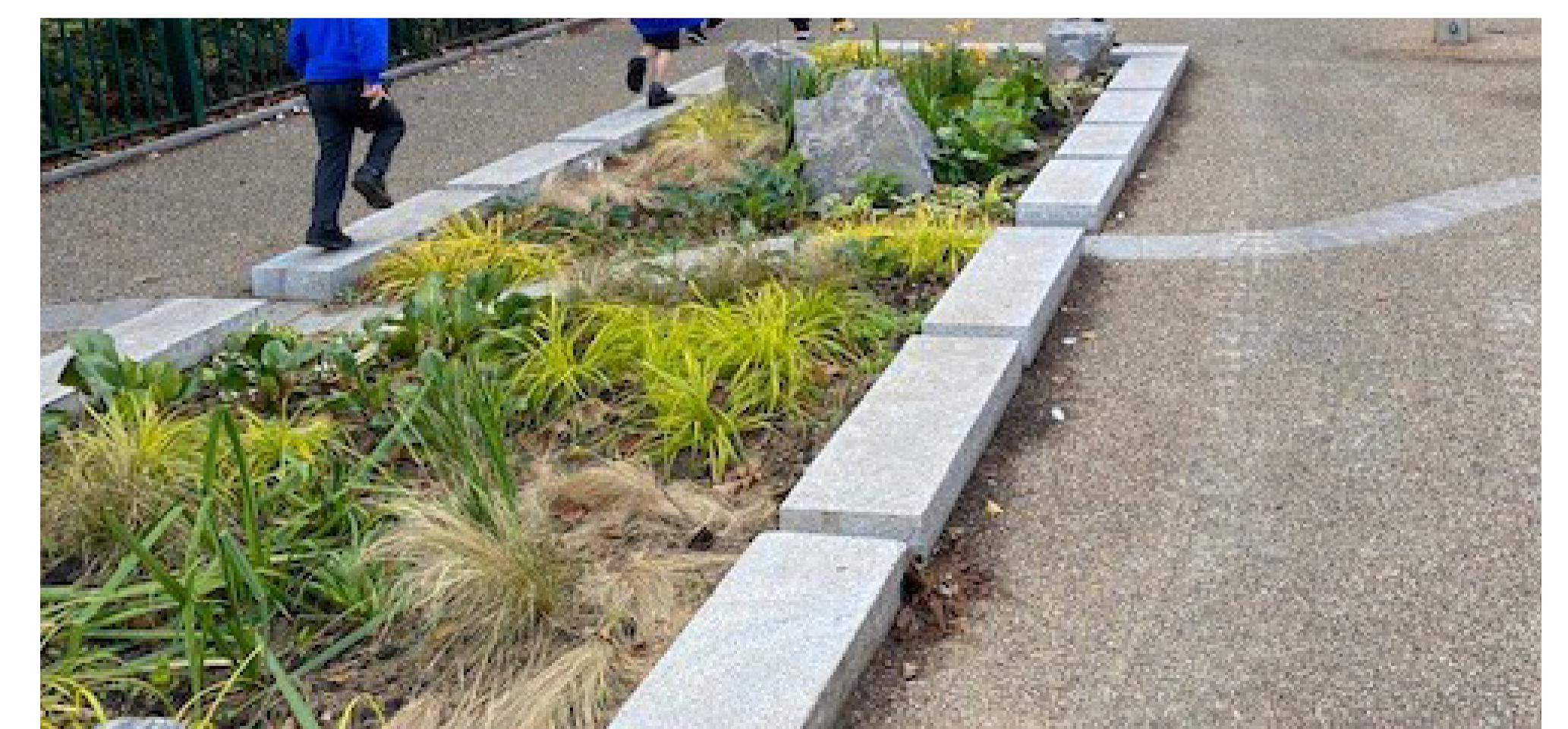
*Aster amellus* - Aster



*Calamagrostis brachtricha* - Reed Grass



*Centaurea nigra* - Hardhead



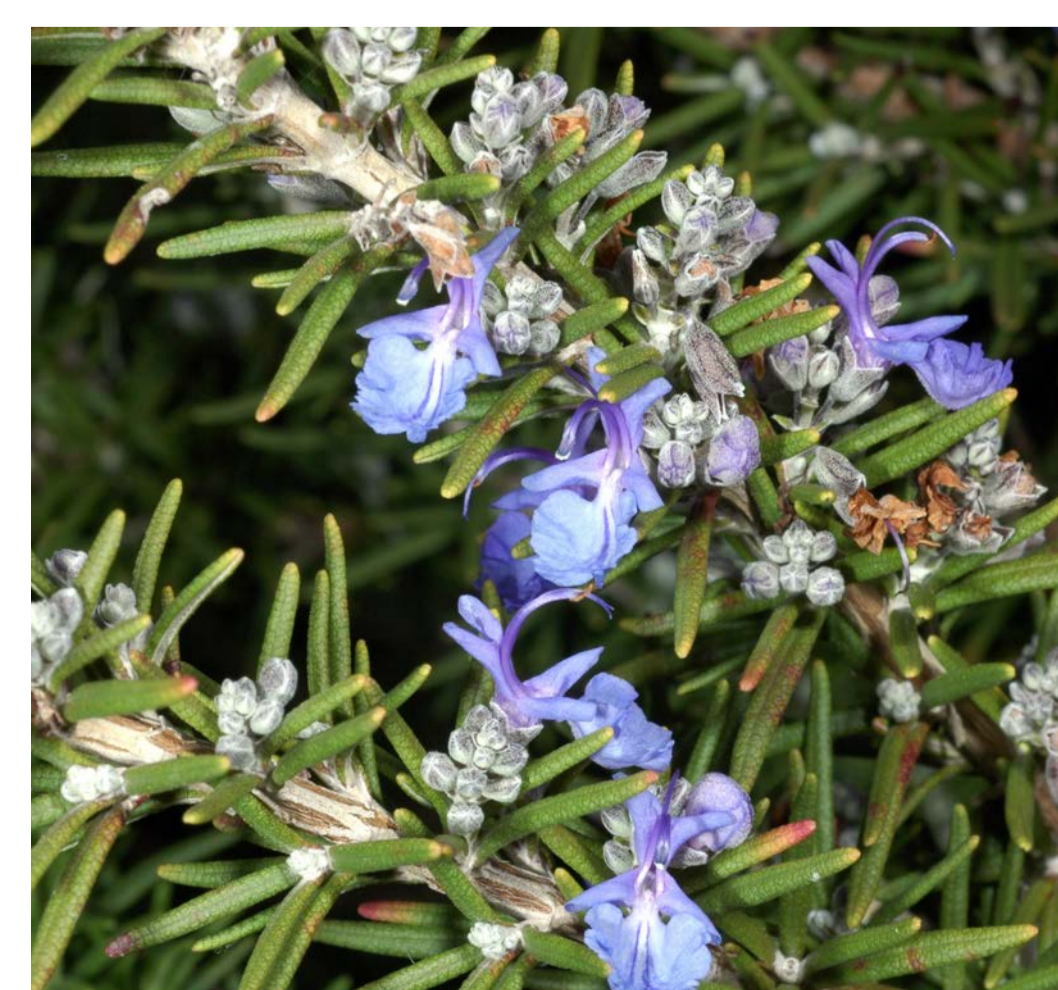
Typical rain garden including incidental play



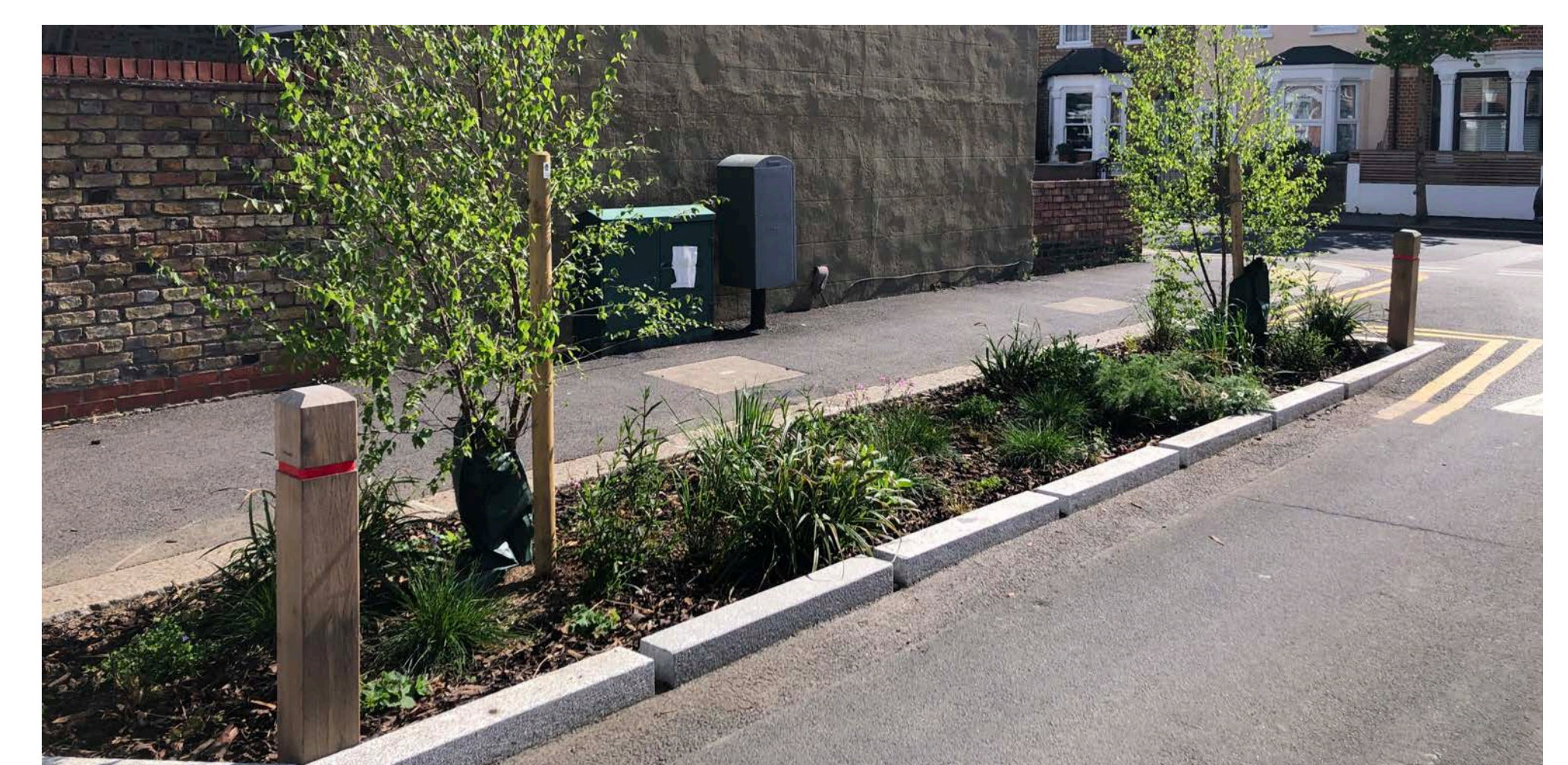
*Deschampsia cespitosa* - Tufted grass



*Eupatorium cannabinum* - Hemp agrimony



*Salvia rosmarinus* - Rosemary



Typical rain garden with SuDS

# King's Passage Flood Mitigation Project



PROJECT  
CENTRE

## SITE LOCATION PLAN

All trees are existing and to be retained



Porous asphalt

## OVERALL LOCATION PLAN



## TYPICAL IMAGES OF RAIN GARDEN SCHEMES



Porous asphalt with garden bed



Porous asphalt with rain gardens

## POROUS ASPHALT

### Porous asphalt benefits:

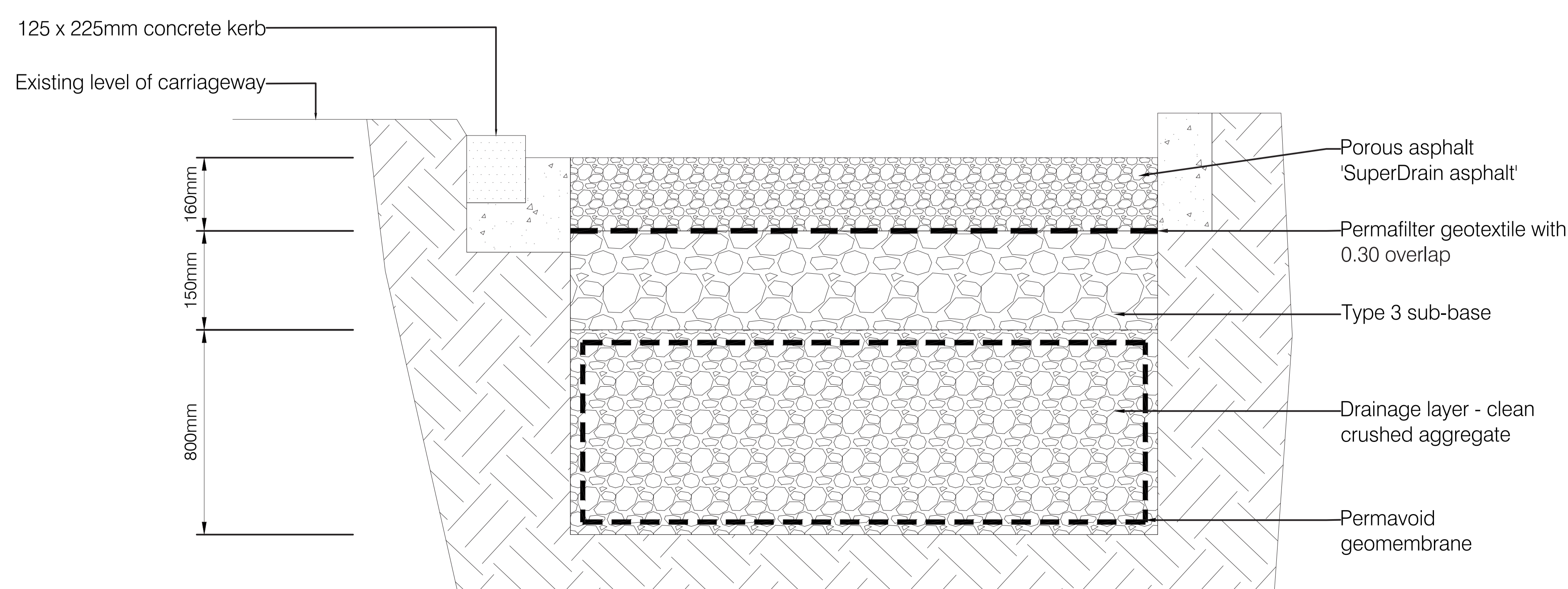
- Can withstand vehicular loading even when used in heavily trafficked roads
- Existing gullies to be retained will act as overflow systems during exceedance events
- Infiltration rate higher than 5,000 litres per hour
- Enough capacity/permeability to cater with rainfall landing directly on the surface and also adjacent areas (roofs, front gardens, etc.)
- Compatible with utilities corridors and shallow services
- Controlled discharge into Thames Water network, providing storage and attenuation of discharge rates.
- Easy maintenance and high durability (>20 years)

## TYPICAL CROSS SECTION C-C

All dimensions are indicative only and can vary



## POROUS ASPHALT DETAIL



## POROUS ASPHALT DIAGRAM

