



# Waltham Forest

GET  
YOUR  
FREE  
COPY

SPRING 2024

NEWS

ISSUE 252

Mayor of London and London Assembly  
elections are on **Thursday 2 May 2024**

Your vote matters.  
Don't lose it!

REMEMBER TO:

1  
Register  
to vote by  
16 April 2024

2  
Check my  
photo ID

3  
Vote at  
the polling  
station!



Scan the QR code to  
register to vote and check your photo ID

[electoralcommission.org.uk/voterID](https://electoralcommission.org.uk/voterID)

0800 328 0280

# The way you vote has changed.

Remember to bring photo ID to vote in a polling station.

Some of the photo ID you could use:

✓  
Passport

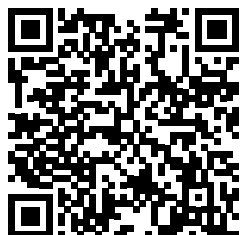
✓  
Photocard  
Driving  
Licence

✓  
Blue  
Badge

✓  
Freedom Pass  
or Oyster  
60+ Card

✓  
Pass  
Cards

✓  
Biometric  
Immigration  
Cards



Scan the QR code to  
register to vote and check your photo ID

[electoralcommission.org.uk/voterID](https://electoralcommission.org.uk/voterID)

0800 328 0280





**06**  
Mission Waltham Forest



**09**  
Enjoy WF is ten years old



**13**  
Weddings at Fellowship Square



**16**  
Events coming soon

# Waltham Forest

GET YOUR FREE COPY

SPRING 2024

NEWS

ISSUE 252

## Residents' improvement ideas come to life across Waltham Forest

In Summer 2023, thousands of you shared your ideas on how we could improve neighbourhoods in the borough through our Let's Talk Waltham Forest project. The suggestions included new planters and pocket parks, additional playground equipment, and new bins and benches.

Cllr Grace Williams, Leader of the Council, said: "With over 2,000 people sharing their ideas for local improvements, we can make real changes that will have a real impact on residents' lives. This demonstrates one thing: that residents care deeply about their local areas and want to help improve them. I know I speak on behalf of all councillors when I say thank you for taking part. You are helping to make actual change right here in Waltham Forest."

Residents also shared concerns about anti-social behaviour, littering, and community safety. Council teams have already started work to resolve these problems.

Since the engagement closed in Autumn 2023, councillors have been working with council officers to assess the ideas. We are delighted to announce more than 36 improvements across 12 wards so far – with many more to come this year.



VISIT PAGES 10 AND 11 TO READ MORE.

A visit to the fabulous Fixatorium

Page 4



**APPLY NOW**

Take control of your future





## OUR MISSION WALTHAM FOREST

# Council Leader, Cllr Grace Williams



## Using every penny of your Council Tax well

**Like you, we have had to make savings to our budget. We've worked hard to protect the services that residents rely on most.**

After more than a decade of austerity, during which real-term government funding has decreased by over a third, we cannot continue to meet your needs without increasing Council Tax.

No one likes to see their bills rise – especially during the cost-of-living crisis. I know this is not welcome news. I want you to be

confident that we are using your Council Tax to fund vital services. On the opposite page, we have published details of just some of the services we provide.

Demand for these important services continues to increase. We are now responsible for the adult social care of 1,000 more people than we were in 2019, and the number of people approaching us at risk of becoming homeless was 50 per cent higher in November 2023 than the year before. We are the

safety net that supports the most vulnerable and prevents the least well off in our society falling through the cracks, but we need the funding to be able to continue this work.

At the same time as protecting services, Waltham Forest Council is bringing in the investment that local people need to be able to access new jobs, training opportunities, and housing. In this issue of WFN, you can find details of how we're investing nearly £750m over the next ten years to build 3,017

new homes, of which over half will be affordable. We are also creating 1,116 new jobs alongside 638 apprenticeships and work placements. Our plan for inclusive, sustainable growth also protects the unique feel of our town centres and preserves much-loved parks and green spaces for the community to enjoy for years to come. Visit pages 14 and 15 for more information.

We're lobbying the Government hard so that we received the fair deal residents deserve. Thank

you to everyone who signed our petition to save the Household Support Fund (HSF) and helped persuade the government to keep this vital lifeline going. While I welcome the Chancellor's announcement that the HSF will continue, it is only for six months rather than the two years charities and others have called for. Our fight for a long-term commitment to give us the funding we need continues.

Our mission is Waltham Forest – residents come first in everything we do, always.

### • MAYOR'S UPDATE •

#### Cllr Roy Berg, the Mayor of Waltham Forest, served in the Royal Air Force for 34 years.

His fundraising activities support veterans, ex-service people, and their families. He is also passionate about helping young people achieve their own ambitions, particularly through apprenticeships.

#### Mayor helps celebrate residents' milestone birthdays

The Mayor and Mayoress both enjoyed visiting local residents Doris, Victoria, Nellie, and Sophia, who have recently celebrated 100th, 102nd and 104th birthdays! As well as celebrating these milestone birthdays, they met the wonderful care home staff.

#### Mayor of Waltham Forest's Quiz Night - May 2024

If you would like to support the Mayor's final charity fundraiser of his tenure, the Mayor will be hosting a Quiz Night in the borough in May 2024!

Ticket prices are £80 per team (8 people) or £11 per single ticket. Places are limited - to get involved please scan the QR code below:



Cllr Roy Berg, the Mayor of Waltham Forest

### Contact Waltham Forest Council



[www.walthamforest.gov.uk](http://www.walthamforest.gov.uk)

**BETTER ONLINE** | More services available online.



## Waltham Forest News

**Edited by:** Corporate Communications Team

Waltham Forest News wants to hear from people in the local community. If you have a story that you'd like us to cover, email [walthamforestnews@walthamforest.gov.uk](mailto:walthamforestnews@walthamforest.gov.uk).

[facebook.com/walthamforestcouncil](https://www.facebook.com/walthamforestcouncil)

**Advertising and promotional enquiries:**

Please email: [advertisingwfn@walthamforest.gov.uk](mailto:advertisingwfn@walthamforest.gov.uk)

Waltham Forest Council does not accept responsibility for the content of any non-council advertisements in Waltham Forest News.

[@lbwalthamforest](https://www.instagram.com/lbwalthamforest)

[@wfcouncil](https://www.twitter.com/wfcouncil)

Their inclusion does not mean that the council endorses the company or product being advertised.

Waltham Forest News is produced using trees from sustainable managed forests where more trees are planted than felled. Please recycle Waltham Forest News when you have finished with it.



Waltham Forest News is published quarterly by London Borough of Waltham Forest with a print run of 123,000 copies delivered to homes, organisations, businesses and bulk drops in the borough.

The official independently audited free letterbox delivery of Waltham Forest News is 102,773 ABC Regional January to December 2021



# Your Council Tax: What it pays for

Meeting the changing needs of people who live, work, and study in Waltham Forest



## Jobs, Skills and Business

**2,500** local businesses received direct support  
**5,428** learners enrolled in Adult Learning Services courses

## Neighbourhoods

**218,331** monthly bin collections  
**5,415** potholes filled in

## Housing

**153** social affordable rent homes completed  
**94** new homes for social rent under construction

## Helping residents through the cost-of-living crisis

**£100,000** spent supporting food banks  
**£150,000** used to help residents save on energy bills  
**15,500** visitors to council-funded community living rooms

## Tackling the climate emergency

**£50,000** invested in retrofitting local homes  
**191** extra electric vehicle charging points

## Stronger, safer communities

**30** arrests per month helped by our CCTV cameras  
**14,939** antisocial behaviour reports investigated by community safety officers

## Culture and leisure

**310,000** guests to destinations, events, and activities across the borough  
Over **730,000** visits to our libraries



## Struggling with your Council Tax?

Please don't suffer in silence – we can help.

Please visit [www.walthamforest.gov.uk/counciltaxsupport](http://www.walthamforest.gov.uk/counciltaxsupport) or scan the QR code



## 4 Environment

# Big ideas from our Fixatorium friends

### Rethink, recycle... repeat!

For three days in February half term, the Leytonstone Tube station pop-up space at 1 Church Lane was transformed into a miniature Waltham Forest wonderland, made entirely of recycled and re-purposed materials – collected from the homes of our residents and local businesses.

Local artist Sean Rodrigo, of the Fixatorium, rose to the challenge of creating some of the borough's most famous buildings entirely from re-used cardboard – including a movable number 55 bus and a remote-controlled recycling truck.

Pizza boxes and old parcel packaging, shredded cardboard and paper were all transformed into replicas of local landmarks including the William Morris Gallery, Whipps Cross Hospital, and the Sir Alfred Hitchcock Hotel.

.....  
"So many families came to visit - you could see how engaged the children were"  
.....

The installation was open to the public to drop in and visit over the school break. Children (and many adults!) took the chance to drive a remote-controlled recycling truck around the town, make a miniature building of their own to add to the display, and learn about which items should go in which bin to make sure we're all recycling as well as possible.

Sean Rodrigo said: "I loved bringing this project to life as part of the Recycle Right campaign. Over the days it was open so many families came to visit, and you could see how engaged the children were with the work. It really helped to start conversations about where our old cardboard materials go, and what can and can't be recycled or re-purposed. As a Waltham Forest resident myself, it has certainly made me think more about what we use and what we throw away."

Many residents across the borough have been recycling right, but we want recycling rates to rise even further. Make sure you're up to date with which items can go in your recycling bin and which items you should rethink, like nappies, crisp packets, and greasy pizza boxes.



The installation delighted families over the half-term holiday



Sean Rodrigo from the fabulous Fixatorium

### More info

Find out more by visiting [www.walthamforest.gov.uk/recycleright](http://www.walthamforest.gov.uk/recycleright)





# STRONGER, SAFER SWIMMERS START EARLY.

Better Swim School produces over 100,000 stronger capable and safer swimmers across the UK each year. It is designed to be convenient, flexible and affordable for all ages and abilities taught by qualified and experienced teachers. Our safe and friendly environment will ensure your child enjoys life long fun in and around the water.

Discover how to kick start your child's development at [better.org.uk/lessons](https://better.org.uk/lessons)



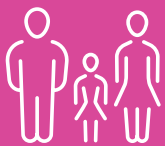
# OUR MISSION WALTHAM FOREST

**Our new commitment to residents is all about making access to council services better and improving your quality of life, with a focus on six priorities.**

Cllr Grace Williams, Leader of the Council, said, “We know that when you ask us for help, you aren’t always able to access the right support or information you need straight away – and that needs to change.

“Although we, like many other councils across the country, are struggling financially, we want you to know that we are prioritising front line services so that you get the right support at the right time. When you ask for help, we’re going to make sure you can get it where and when you need it.

“Mission Waltham Forest is our bold new plan to tackle the housing crisis, reduce fear of crime and provide the outstanding experience you deserve. We want you to hold us accountable to our missions and get involved wherever you can.”



## MISSION ONE

**Ensure every family and every child are given every opportunity**

Improving our offer to families, making sure they have equal access to support and services no matter where they live in the borough.



## MISSION TWO

**Build an economy that works for everyone**

Investing £749 million in local people and places and reducing inequalities, ensuring everyone can access new opportunities.



## MISSION THREE

**Make Waltham Forest a great place to live and age well**

With a 70 per cent rise in families using council funded food banks, we will make sure residents can access support services when and where they need it.



## MISSION FOUR

**Tackle the housing crisis head on**

With 153 social affordable rent homes completed and a further 94 under construction, we are aiming to help people find good quality homes in the borough.



## MISSION FIVE

**Lead the way for a net-zero borough**

We have invested £150k to reduce residents’ fuel bills and continue to drive our climate action forward, making a greener borough for our future.



## MISSION SIX

**Safe, green neighbourhoods where everyone can thrive**

Working with police to increase patrols, responding to anti-social behaviour reports efficiently, everyone has the right to feel safe.



# Local resident Suzie leads the way towards a net-zero borough



**Suzie Madine is the owner of Make Do and Wonder, a gift shop which has been running in the Wood Street area for ten years.**

It has a unique role in the local community, specialising in slow fashion and re-fashioned garments.

Suzie explains: “We make most of what we sell and usually take ‘unusable’ items of clothing that would otherwise be sent to landfill to be repurposed into new items for the community. The idea is to highlight that a garment that may seem like waste or something to be thrown out, may actually have the potential to

be repurposed into something really fantastic with a little love and care.

“We have a partnership with the Salvation Army and take lots of clothes – often things like men’s dress shirts for example – which are in various states of disrepair. We often completely rework these items, often combining and creating a completely new look.

“We want to be able to make a difference locally here. Everyone has a role to play in fighting the climate crisis and we want to do our bit to cut down on our waste as a community and offer a sustainable alternative to fast fashion.”



Suzie Madine, Make Do and Wonder

# Tee and daughter Sienna love the Treasure Our Youth sessions



Tee and daughter Sienna

**In early 2023 Waltham Forest launched Space4All, part of its new Family Hubs network. Space4All provides young people with safe, fun and free activities, usually right after school.**

18 sessions take place in familiar spaces across the borough, from churches to community halls and in Family Hubs themselves. Thousands of young people have enjoyed these sessions in their first year.

Treasure Our Youth is a session for 9- to 12-year-olds taking place at three Family Hubs across the borough. The sessions are free, inclusive of young people with and without special educational needs and disabilities. One parent, Tee, brings her daughter Sienna every week.

“She really enjoys being among other children that have special needs as well. When she leaves the session, she’s got a really calm aura and she’s really inspired. There are children of

all different needs, some visible, some not, and they learn to be among each other and help each other out. And they get fed! So I get to have a couple of hours by myself.

“Her favourite activity is arts and crafts – she often comes home with something she’s made, whether it’s a fan, a boat, a simple drawing. Or a friend’s number, which is really cool!”

Find out more about Space4All at [walthamforest.gov.uk/space4all](http://walthamforest.gov.uk/space4all)



## Find out more

[www.walthamforest.gov.uk/mission](http://www.walthamforest.gov.uk/mission)

**OUR  
MISSION  
WALTHAM  
FOREST**



**WALTHAM FOREST**  
**Easter Holiday Fun**

**FREE ACTIVITIES THIS EASTER**  
**FOR 5 TO 11 YEAR OLDS**

THIS EASTER WE HAVE A WIDE RANGE OF FREE EXCITING ACTIVITIES ACROSS THE BOROUGH FOR FAMILIES, CHILDREN AND YOUNG PEOPLE TO ENJOY DURING THE EASTER HOLIDAYS  
 ALL ACTIVITIES WILL TAKE PLACE BETWEEN  
**2 APRIL TO 12 APRIL 2024**

TO FIND OUT MORE SCAN THE QR CODE OR VISIT  
[WALTHAMFOREST.GOV.UK/HOLIDAYS](http://WALTHAMFOREST.GOV.UK/HOLIDAYS)

 Waltham Forest





**WALTHAM FOREST HOLIDAY ACTIVITY AND FOOD PROGRAMME**  
**2 APRIL TO 12 APRIL 2024**

Are you aged between 5-16 and in receipt of benefit related free school meals?

This Easter we have the opportunity for you to try a wide range of free activities, have fun, make friends and enjoy a free meal every day across the borough.

**BOOKING IS ESSENTIAL**  
 on all activities so book early to avoid disappointment

To book your place and find out more scan here or visit  
[WALTHAMFOREST.GOV.UK/HOLIDAYS](http://WALTHAMFOREST.GOV.UK/HOLIDAYS)






## This year, we're celebrating 10 years of Enjoy Waltham Forest

Our pioneering programme has made Waltham Forest an easier and safer place to walk and cycle



In 2024, we've got even more ways you can get involved – whatever your experience or ability. Whether you've already started walking or cycling or have never been on a bike before, we've got something for you.

### Did you know...?

- **We can help to get you cycling for free:** whether it's borrowing a bike from the Council, coming along to a Dr Bike maintenance check or trying out different kinds of cycles at an All Ability Club.

- If walking is more your thing, we have a series of walks that showcase the history of the borough – plus free Feel Good group walks taking place every week. Find out more about all of the ways we can get you riding or walking: [bit.ly/WFWalkandCycle](https://bit.ly/WFWalkandCycle)
- Tour de Waltham Forest is coming back this year, bigger and better than ever! It's the borough's biggest group ride where all are welcome
- You can sign up to our monthly newsletter to hear the latest about all things walking and cycling: [bit.ly/Enjoy10Newsletter](https://bit.ly/Enjoy10Newsletter)

## Guest blog: Mariam Draaijer, CEO of JoyRiders

Mariam and her team of JoyRiders are a group dedicated to helping women gain confidence in cycling

**“I started cycling in Waltham Forest in 2014, just at the start of what was then called the ‘mini-Holland’ scheme.**

My children were small at the time, and went to school in Walthamstow Village. We moved a bit further away, and I got them bikes so we could start cycling in. Over the years we were doing that we could see the improvements happening. At first there were just some planters, and then things like the one-way roads and cycle lanes. As the children got older it enabled my daughter to start cycling to school on her own.

I joined JoyRiders in 2016. It was started as a way for a few friends to get out on cycle rides together – and now we run group rides every week and have a WhatsApp group of over 250 people. Our group has benefited from a

Community Walking and Cycling Fund grant, which we used to run a ‘family summer of cycling’ – organised rides for families across the borough. We lent bikes to people who didn't have them, and had people from ages 4 to 60 join us.

I'm passionate about helping people into cycling because it gives them more freedom and independence. Looking back over the 10 years of Enjoy Waltham Forest, it's definitely a more common sight now to see people on bikes – and to see different kinds of people, using cycling for their everyday mode of transport.

Hopefully this is true for more and more people as Enjoy Waltham Forest continues through 2024 and beyond!”



Mariam Draaijer



JoyRiders



# YOUR VOICES SPARK PRACTICAL ACTION

In Summer 2023, you gave us over 2,600 brilliant suggestions about practical improvements you wanted to see in your local area. We would like to say a huge thank you to everyone who got in touch to share their ideas.

All of the practical improvements have come from you – so thank you.

Council officers have been working with councillors to understand how we can deliver these for you. You also told us about 200 issues that our teams were able to solve quickly.

## YOU SAID – WE DID:

### ENVIRONMENTAL AND PARKS

Responded to 27 environmental reports which include:

- Repairing items such as drinking fountains
- Making areas safer including play areas

### COMMUNITY SAFETY ISSUES

Responded to 45 antisocial behaviour community safety issues including:

- Increasing patrols by park guards to discourage public drinking
- Working with Transport Police, ensuring they issue community protection warnings around car meets
- Conducting Police-led Environmental Visual Audits (EVAs).

### LITTER, RUBBISH AND FLY-TIPPING

Responded to 101 reports including:

- Launching a fly-tipping campaign to deter fly-tipping across Waltham Forest
- Installing additional litter bins where there is a higher proportion of litter being left
- Continuing work through Community Payback Scheme, cleaning walkways of litter and debris

### DRUG DEALING AND GANGS

Responded to 68 drug dealing and gangs reports, including:

- Flagging locations to the safer neighbourhoods team to be included on their patrols with a focus on identifying drug dealing
- Patrolling identified locations by our anti-social behaviour team and police teams

WALTHAM FOREST

MY NEIGHBOURHOOD

LET'S TALK

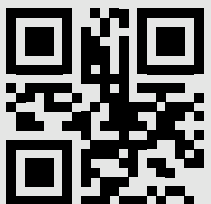


## NEW IMPROVEMENTS INCLUDE:

So far, we have agreed over 39 practical improvements in 16 areas, with the remaining improvements to be confirmed shortly



SIGN UP TO OUR NEWSLETTER



These improvements are being rolled out from March 2024 onwards. To hear about the other decisions and for news and events information straight to your inbox, sign up to our e-newsletter.

- @lbwalthamforest
- London Borough of Waltham Forest
- wfcouncil



# UNLOCK YOUR SUPERPOWER

GET LIFELONG IMMUNITY TO MEASLES, MUMPS AND RUBELLA!

IT'S NEVER TOO LATE TO GET YOUR MMR VACCINE.

SPEAK TO YOUR GP TO GET YOUR FREE MMR VACCINATION.



LOUAY, CHINGFORD



VIHAAN, LEYTONSTONE



ELIZA, WALTHAMSTOW



OLIVIA ROSE, WALTHAMSTOW

Learn more



[bit.ly/NHS-MMR](https://bit.ly/NHS-MMR)

Measles is on the rise in London right now. It spreads very quickly among those that aren't fully vaccinated and can be fatal. One in five children that get measles require a hospital visit and one in fifteen are affected by life-limiting conditions. Mumps and Rubella are also very dangerous, but the MMR vaccine protects from all three. A real-life superpower!





## Gettin' hitched in the heart of the borough

### Newlyweds Beth and Rory tie the knot in Fellowship Square

**Beth and Rory from Walthamstow got married in April last year. They elected to hold their civil ceremony in our Fellowship Heart space, on the grand ground floor of Waltham Forest Town Hall.**

As their guests arrived, they gathered by the fountains before being greeted by Rory on the steps of Fellowship Square.

The wedding party was welcomed by an art deco interior design, featuring gold accents, and cosy wall sconces, as well as a flower arch at the top of the alter.

Once everybody was seated, Beth made her way to the top of the alter to meet Rory, where they were married by registrar Sonia Howard.

So why did they choose Fellowship Square to get married?

"Put simply, we've loved living in Walthamstow Village for the past three years, so to tie the knot so close to home was really special for us," they told us. "We love Fellowship Square and the town hall building."



Photos: @thesmithsandco

"We've loved living in Walthamstow Village for the past three years, so to tie the knot so close to home was really special"



**Sonia Howard is a Waltham Forest Ceremonies Registrar. She has worked as a registrar for 12 years, conducting marriages, civil partnerships, renewal of marriage vows, baby naming ceremonies and more.**

Sonia says: "When customers contact us, we start by inviting them in to come and view Fellowship Square and the various marriage suites that we have available. We have a range of suites to suit most customers' needs, from the small and intimate to our larger suites which can accommodate up to 145 people.

"We will also advise the couple on how they can personalise their ceremony with readings, poetry, personal vows, and the exchange of rings.

"What I enjoy most about being a registrar is the diversity of people that I get to meet from all around the world. Every day is different. My knowledge of geography has greatly improved. I could have it as my specialist subject on Mastermind!"

Fellowship Square is an accessible and inclusive venue that welcomes people and couples from all backgrounds and faiths. Each ceremony can be personalised and tailored to suit the individual needs of the couple.

To plan a ceremony of your own in the historic building, contact the dedicated Waltham Forest Ceremonies team today.



#### More info

Walthamforestceremonies.co.uk  
@wfcemonies on Instagram

WALTHAM FOREST  
CEREMONIES



# 14 Capital Investment

## How we're investing to let the Forest grow

Thousands more jobs, opportunities, and homes for local people

**People who live, work, and study in Waltham Forest will benefit from investment that will bring new jobs, apprenticeships, and leisure opportunities alongside thousands of affordable homes and improved neighbourhoods as part of the council's mission to tackle the issues and challenges the borough and its residents face.**

We all want to see a fairer, more equal borough, where everyone can make the most of their life chances. We are committed to prioritising the things that are most important to residents like building safe, resilient communities, improving our schools, and protecting local heritage.

The Capital Investment Strategy sets out details of how the council will invest £749.2m over the next ten years in the places and - most importantly - the people that make Waltham

Forest such a great place to live, work, and study.

These plans will create substantial benefits for local people. To help tackle the housing crisis we will build 3,017 new homes, of which over half will be affordable, and at the same time create 1,116 new jobs alongside 638 apprenticeships and work placements.

.....  
**These plans will create substantial benefits for local people**  
.....

These skills will help set local young people up for success in their future careers - we want the builders of tomorrow to lay their first foundations in Waltham Forest.

Our investment has seen a number of significant successes in the last year.

These include the completion of Juniper House, where the University of Portsmouth London campus will welcome its first students later this year; the Leyton Green Partnership, where 47 new homes have been built alongside a respite centre for young disabled

people; and Coronation Square in Leyton, a brand-new neighbourhood where residents have already started to move into their new homes.

The council has an important duty to attract inward investment and build a strong,

inclusive local economy that works for everyone. As a prudent, sensible council, we are always looking to ensure our investment represents the best possible value for taxpayers. Access the full Capital Investment Strategy at [bit.ly/WFCapInvest](https://bit.ly/WFCapInvest)





## The right developments in the right place

### How good growth delivers benefits we all enjoy

**In February, the council voted to adopt the Local Plan (Part 1). It outlines our vision for the inclusive, sustainable growth that is needed to help the borough thrive up until 2035.**

Alongside new affordable homes, the Local Plan contains information about the jobs and opportunities that will be created through developments as well as details of how the unique feel of town centres and the borough's local heritage will be protected.

Preserving the natural environment is another key aim of the Local Plan. Waltham Forest has many much-loved parks and green spaces – the Local Plan preserves these precious areas so that they can be enjoyed by the community for years to come.

Councillor Ahsan Khan, Deputy Leader and Cabinet Member for Housing and Regeneration, said: "For decades, the UK simply hasn't built enough homes. Population growth and a lack of housebuilding has

led to soaring house prices in the whole of London. If we don't build enough homes in the borough, our young people will never be able to purchase their own home and we will not be able to help the people on our housing register.

### Residents' needs are at the centre of the Local Plan

"Through our new Local Plan, we can do something about that. We can steer the delivery of the 27,000 new homes whilst ensuring that the infrastructure needed to support them is provided, that local jobs and facilities are secured, that flood risk is reduced, that communities are safe, that air quality is improved, and that the unique and special characteristics of the borough are protected and enhanced."

Residents' needs are at the centre of the Local Plan. The process of creating it combined data and research with the views and opinions of residents, community groups, and local and national organisations such as the NHS, Transport for London, and Metropolitan Police.

The Local Plan was carefully scrutinised by the independent Planning Inspectorate to make sure it met with Government policies and regulations before it was agreed by councillors. The Council is in the process of reviewing and updating Local Plan (Part 2), which identifies the strategic sites across the borough where it is anticipated good growth could be delivered and sets expectations to ensure that it is of the highest quality.

The document will be made available for public consultation later in the year – we'll bring you more information in Waltham Forest News and our Residents' News e-newsletter soon so you can have your say.

## Case study: Walthamstow Wetlands

**Well planned, inclusive development has helped to fund many improvements in the borough over recent years.**

Developer contributions have paid for upgrades to transport and roads, sport and leisure facilities, health services, community safety, green spaces, and much more.

The much-loved Walthamstow Wetlands to take just one example would not have been possible without these contributions. Waltham Forest was able to provide £1.8m of funding to open the wetlands, which now welcome thousands of visitors every year including school groups who enjoy learning about our unique environment and heritage.



WALTHAMSTOW  
WETLANDS



Visitors enjoy a sunny day at the Walthamstow Wetlands



## Enjoy Japanese folk-craft at William Morris Gallery



Combed Mingei teabowl (Shoji Hamada)

**William Morris Gallery is pleased to announce the largest ever exhibition in the UK dedicated to Mingei, the influential folk-craft movement that developed in Japan in the 1920s and 1930s.**

The Art Without Heroes: Mingei exhibition will open in late March and remain open all summer until September.

Visitors will be able to enjoy over 80 works, including ceramics, woodwork, toys, textiles, photography, and film. Some are previously unseen pieces from private collections in the UK and Japan.

Mingei represents “the art of the people” and emphasises the value of traditional craft objects, unnamed makers, and a simple way of life.

The exhibition will open with a special Family Day on Saturday 23 March – which would also be William Morris’s 190th birthday! It will run all summer until Sunday 22 September, and admission is free.

### More info

Get more info at [www.wmgallery.org.uk](http://www.wmgallery.org.uk)

## Screen on the Square



Local cinema enterprise **Stow Film Lounge** is at **Fellowship Square** until the end of April, bringing more movie magic to you including evening and weekend screenings and a **Saturday Morning Kids’ Film Lounge**.

Upcoming features include the critically acclaimed, suspenseful legal drama *Anatomy of a Fall* on Friday 22 March and family favourite comedy *Chicken Run* on Saturday 23 March.



Stow Film Lounge

### More info

Check out full listings at [www.stowfilmlounge.com/buytickets](http://www.stowfilmlounge.com/buytickets) and be sure you follow [@stowfilmlounge](https://www.instagram.com/stowfilmlounge) on Instagram!

## Local music festival returns to Leytonstone



**From high noon till the wee small hours on Saturday 4 May the much-loved, locally produced Shake The High Road music festival returns.**

This year guests can enjoy over 20 live artists and DJs, special talks, and interviews alongside tasty local food and drinks.

The festival spotlights some unique E11 venues, including St John’s Leytonstone, the Leytonstone Social Club, Red Lion ‘Lion’s Den’, and

Luna Lounge with support from local organisations Dreamhouse Records, Walthamstow Rock ‘n’ Roll Book Club, Route, and Underdog.

Shake The High Road has been made possible with funding and support from Waltham Forest Council.

### More info

Tickets available now at [www.shakethehighroad.com](http://www.shakethehighroad.com) and follow [@shakethehighroad](https://www.instagram.com/shakethehighroad) on Instagram for all the latest updates.



Credit: Jungle Brown, Shake The High Road, Leytonstone 2017

## Spring into nature

**The Hive, Waltham Forest’s environmental education service, is hosting a special event at Fellowship Square on Wednesday 3 April between 10:30am and 3:30pm.**

Partnering with LET’S GET OUT and Plant Compassion, guests can enjoy an educational

selection of outdoor activities including orienteering, animal handling, and bush craft to boost your knowledge about insect ecosystems, sustainability, and seasonal foods.

### Entry is free

Some activities will be ticketed with a small fee.

**SCAN THE QR CODE TO FIND OUT MORE.**





WALTHAM  
FOREST  
**ADULT  
LEARNING  
SERVICE**



## Would you like to improve your IT skills?

Digital courses at all levels starting April 2024.

Enrol today to boost confidence and improve your job skills.

Introduction to Digital Skills

Digital Skills - Beginners

Digital Skills - Improvers

Digital Skills - Intermediate

Digital Skills - Advanced

EXCEL - Formulas and Functions

Design your own Website

PowerPoint for Beginners



Learn more about our wide range  
of exciting courses on our website:

**[lbwfadultlearning.co.uk](http://lbwfadultlearning.co.uk)**

or call: 020 8496 2974

**[bit.ly/als-digital-courses](https://bit.ly/als-digital-courses)**





## Explore your creativity!

Whether you are a beginner or advanced, our courses will let your creativity flourish while also unlocking new skills and interests.

Arts and Crafts

Ceramics

Drawing

Hat Making (Millinery)

Jewellery Making

Printmaking

Painting

Photography

Sewing and Fashion

Upholstery

Textiles

Family Workshops



SCAN ME



[bit.ly/als-creative-courses](https://bit.ly/als-creative-courses)



# LIBRARY OF THINGS

👋 **Hey Waltham Forest!**

**Rent 30+ items for DIY, cleaning, gardening, events and more**

- 💰 Save money. Rent items from £1.50 per day.
- 🌍 Save the planet. Put a stop to landfill waste.
- 📦 Save cupboard space. Cut down on clutter.

Great for  
spring!



Use code  
**WALTHAMFOREST20**  
for 20% off  
your next hire  
Valid until 31/03/24



**Book online, find us  
inside Leytonstone Library**

🔍 [libraryofthings.co.uk/leytonstone](https://libraryofthings.co.uk/leytonstone)





# THE FINE FOR FLY-TIPPING IN WALTHAM FOREST IS £750

**NO IFS, NO BUTS; WE WILL  
FIND YOU AND FINE YOU!**

Luckily, avoiding a fine is easy. If your rubbish won't fit in your bin, you can take it to the tip for free – or book a large item collection, also free for up to five items.

Currently, the council spends over £7 million each year to clear up fly-tips and keep neighbourhoods clean and tidy. In a cost of living crisis we don't think this is acceptable and we have to make the punishment harsher to make fly-tippers think twice.

No-one wants to see their neighbourhood covered in other people's rubbish. Yet in just three months the Council has had to issue 2,000 fixed penalty notices (FPNs) to people dumping waste around the borough.



WALTHAM FOREST  
MY NEIGHBOURHOOD

Scan QR code or visit  
[walthamforest.gov.uk/flytipping](http://walthamforest.gov.uk/flytipping)



*I'm looking for...*

## Safety, Love, Respect, Stability, Home, You.

*We offer:*

Take the first step to becoming a Foster Carer and fill out our short form at:

[fosteringwalthamforest.co.uk](http://fosteringwalthamforest.co.uk)



A competitive fostering package including pay of up to £519 per week, per child



Up to 66% taken off your Council Tax bill if you live in Waltham Forest



A free parking permit for your zone if you live in a CPZ in Waltham Forest



*Join us*

Join our online Fostering Information Event on Thursday 21 March at 11am visit [www.fosteringwalthamforest.co.uk](http://www.fosteringwalthamforest.co.uk)



Scan the QR code to find out more or call the team 020 8496 3437

**#BeTheOne**

Foster





# In your better nature

## Make new friends and help keep Lloyd Park looking great

**If you are walking through William Morris Garden and Lloyd Park in the coming weeks, take a moment to appreciate its beautiful botany.**

Thanks to a crack team of dedicated volunteers who meet up every single week to work on them, the flowerbeds and gardens are set to become even greener and more nature friendly as spring blooms.

The Lloyd Park Volunteer Gardening Programme is run by Groundwork London in partnership with the Council. As well as providing some of the vital regular maintenance of some of the greenery in the park, it creates a hugely

beneficial place for people to meet, socialise, and spend time together.

Abbas, a volunteer, explains: "Whenever I walk through the park with friends, I show them the work I have been part of. I'm extremely proud of myself and the team. This was the first time I did volunteering and thanks to this experience I have fallen in love with helping. This opportunity has changed my life."

Another volunteer, Frank, adds: "I really love the spirit of the team, and everyone is really encouraging. I never dared doing any pruning before, but now I feel comfortable to just give it a try."

Groundwork Gardener Saira Gregory leads the sessions, which take place every Thursday. She explains that nature and biodiversity are at the heart of everything that the volunteers work on: "It takes real teamwork to create a beautiful garden but we also want to make sure that that it is really wildlife-friendly too."

"The council selects a high proportion of pollinator-friendly species to support bees particularly, and they select bird-friendly species too, shrubs for habitat and berries for food. They also include plants that flower at different times of year, so there's always food for pollinators."

"No herbicides are used, just weeding by hand, and we mulch the beds, which provides habitat for invertebrates and improves the soil."

.....  
**"This opportunity has changed my life"**  
.....

The Lloyd Park Volunteer Gardening Programme is always welcoming new participants to the scheme. Cllr Clyde Loakes, Deputy Leader and Cabinet Member for Climate and Air Quality, said: "Thank you so much to everyone who is part of this wonderful local programme for working so hard to keep

William Morris Garden in Lloyd Park looking not just beautiful but nature-rich and wildlife-friendly.

"We have an ambitious climate action programme and supporting local volunteers to take positive action in their local area is central to achieving our aims. We are proud to work with volunteer organisations and give them the help they need to flourish."

### More info

Visit [bit.ly/LloydPark\\_Vol](https://bit.ly/LloydPark_Vol) for information on getting involved with volunteering opportunities in local parks.



Lloyd Park provides a haven for wildlife all year round



The volunteers are out every week come rain or shine



It also gives local people and well-behaved dogs a place to stretch their legs



# A design for life

## Celebrating your local favourites

The annual Waltham Forest Design Awards celebrate high quality design in the borough. This year we're looking forward to showcasing more exceptional architecture and landscape design projects.

Last December, we opened nominations for projects between 2021 to 2023. We had a brilliant response and in January our expert panel of judges shortlisted 11 brilliant projects - now it's time to vote for your favourite.

You can choose your favourite architecture or landscape project from the shortlist for the People's Choice Award 2024.

Voting is easy. Visit the Let's Talk website, link below, or scan the QR code and select the project you want to win by Friday 24 May 2024.

The project with the most votes will win the People's Choice Award at the ceremony in June. The Waltham Forest Design Award judging panel is made up of Stephanie

### Vote for your favourite architecture or landscape project

Edwards, Alex Ely, Tori Allison-Powell, Lara Kinneir, and Nisha Kurian.

Stay up to date with our Waltham Forest Summer of Design by visiting the Let's Talk website at [talk.walthamforest.gov.uk](http://talk.walthamforest.gov.uk)



The People's Choice Award winner for 2021, the Forest Garden in Leytonstone



## The People's Choice Award

The People's Choice winner in 2021 was the Forest Garden by HUT Architecture and HOS Landscapes at the junction of Drayton, Southwest, and Bulwer roads, E11 1BX.

A lonely traffic island in the heart of Leytonstone was transformed into a vibrant community garden for residents to enjoy. The garden was completed in October 2020 and has been designed to provide a habitat for bees, beetles, and butterflies. The garden has been adopted by a community of green-fingered residents, who continue to nurture the plants.



Scan me to vote for your favourite project

# Have your say on Leyton Mills planning guidance

## Working with the community to guide growth over next decade

To have your say please visit [talk.walthamforest.gov.uk/leyton-mills-spd](http://talk.walthamforest.gov.uk/leyton-mills-spd)



As part of our vision to create an accessible and sustainable neighbourhood in the Leyton area, we are asking residents to share their views on the Leyton Mills Supplementary Planning Document (SPD), which will help to guide inclusive growth in the area over the next 10 years.

The council has engaged with landowners, ecologists, architects, developers, community members and businesses to establish a vision for how the Leyton Mills area could be developed. This includes four key sites:

- New Spitalfields Market
- Leyton Mills Retail Park
- Temple Mills Bus Depot
- Eton Manor in the Queen Elizabeth Olympic Park

The SPD will ensure that these sites are developed in a coordinated way to achieve our aims for better green spaces that reduce flood risk and help tackle the Climate Emergency.

To have your say please visit [talk.walthamforest.gov.uk/leyton-mills-spd](http://talk.walthamforest.gov.uk/leyton-mills-spd) or scan the QR code to read the about the plans for Leyton Mills and fill out the survey.



Alternatively send us an email at [SPDconsultation@walthamforest.gov.uk](mailto:SPDconsultation@walthamforest.gov.uk) or write to us at **Place and Design Team, Waltham Forest Town Hall, Forest Road, Walthamstow, London, E17 4JF.**

**All comments must be received by 5pm on Sunday 14 April.**

Paper copies will be available at Waltham Forest Town Hall and Waltham Forest libraries during normal opening hours.





# Do you provide unpaid care for someone?

Even if this is caring for a family member or friend.  
Unpaid carers could be entitled to support from the Council.

Pop into your local library for more information.  
Or scan the QR codes below

**YOUNG  
CARERS**  
SCAN HERE



[bit.ly/wfyoungcarers](https://bit.ly/wfyoungcarers)

**ADULT  
CARERS**  
SCAN HERE



[bit.ly/wfadultcarers](https://bit.ly/wfadultcarers)

**PARENT  
CARERS**  
SCAN HERE



[bit.ly/wfparentcarers](https://bit.ly/wfparentcarers)



# Tackling anti-social behaviour with police and the community

## Driving drugs out of Leyton

Last summer, the Council received a sudden spike in reports of anti-social behaviour concentrated around Leyton High Street.

This came to head in September and a public meeting was held with residents, councillors, the Met Police, local MP John Cryer and other partners in attendance. The issues raised by residents included a behaviours and environmental concerns all linked to an increase in illegal drug use in the Leyton area.

Over the following six months, the council and police have been working together to take action against perpetrators, raise awareness of reporting mechanisms for residents, and extend the support that is available for people experiencing drug addiction or homelessness. This has included the following:

### COUNCIL

- Six Premises Closure Orders and one Full Closure Order.
- Regular walk and talks held with residents.
- Five new CCTV cameras bringing the Leyton network to over 50

### POLICE

- 72 arrests of key offenders
- Four search warrants executed
- 104 ASB warnings and Community Protection Warnings issued

### OTHER PARTNERS

- Change Grow Live regular in-person patrols and outreach to people struggling with drug misuse
- Local housing providers working with Council to improve environment

Other interventions have included offering housing support to homeless people living in an illegal encampment and removing a stash of car number plates that had been squirreled away.

Since the targeted work to address issues in Leyton began, drug-related reports to the police and Council have reduced by 84 per cent from September 2023 to January 2024 and drug-related theft offences, which spiked last year, have also fallen off significantly.

.....  
Since work in Leyton began, drug-related reports have reduced by 84 per cent and drug-related theft has fallen significantly  
.....



Officers from the Council and Met Police work together to enforce parking restrictions



People staying at this illegal encampment were offered help and support by the council housing service

If you are experiencing anti-social behaviour including noise nuisance, large groups behaving badly, or aggressive behaviour report it at [walthamforest.gov.uk/reportASB](https://walthamforest.gov.uk/reportASB)

If a crime is in progress or someone is in danger, always call **999**. To report a non-emergency crime, you can call **111** or go online at [met.police.uk](https://met.police.uk)



Give your child the...

From April 2024, childcare support is expanding for working families.

# Best Start in Life



Up to 30 hours a week!

**APPLY NOW**

**FREE Childcare and Early Learning for children aged 9 months to 4 years old**

For more information, visit [walthamforest.gov.uk/childcare](http://walthamforest.gov.uk/childcare) or contact Waltham Forest Childcare Team on 0208 496 3566 or at [childcare@walthamforest.gov.uk](mailto:childcare@walthamforest.gov.uk)



\*All 3 and 4 year olds in England are eligible for 15 hours of free childcare and early learning per week from the term after their 3rd birthday. In working families who meet eligibility criteria, parents of 3 and 4-year-old children get 30 hours of free childcare per week. Eligible parents of 2-year-old children (from April 2024 for working families) and children aged 9 months and older (from September 2024) will also be eligible for 15 hours of free childcare



# Take control of your health

**NHS**  
Barts Health  
NHS Trust

**ONLINE**

We have launched an online portal that gives you secure access to your health record.

Once you've signed up, you'll gain access to a wealth of information, including your hospital appointments, documentation, and now, your laboratory blood results!

It's free and easy to use for all Barts Health

NHS Trust patients.

For more information and to sign up to Patients Know Best, please scan the QR code.



Or visit: [bartshealth.nhs.uk/patients-know-best](http://bartshealth.nhs.uk/patients-know-best)



**WeCare**  
Our vision, values and behaviors





## Arrested decay: Soho Theatre Walthamstow's unique interior style

A special column by Mike Fox, Conservation Officer



**You might be hearing the words “arrested decay” more and more as the building work on Soho Theatre Walthamstow comes to a head this year.**

What does it mean? It's a common approach used in the conservation of historic buildings, especially theatres.

**“It makes a virtue of a building's rich history”**

It makes a virtue of a building's rich history, by showing and celebrating different layers of its decoration. You might have seen it in the new theatre in Alexandra Palace, Battersea Arts Centre, or Wilton's Music Hall.

With arrested decay, there's no aim to replicate a pristine original and ignore everything that came after. Messy spots aren't necessarily painted over, and it doesn't try to reverse any

superficial deterioration. Instead, it freezes it in time, so the building reveals its own rich history through its layers of different exposed paints and textures.

This is the approach we've taken with the main auditorium of Soho Theatre Walthamstow, and we can't wait for you to see it. The former Granada Cinema is one of the best surviving examples of early cinema architecture in the country, influenced by Spanish-Arabic architecture – hence 'Granada'.

The original decorative scheme used golds and greens with tinted glazes to give the impression of mosaic tiles. Then in the 60s, earthy orange hues were overpainted to form the background to performances by the Beatles and Ronettes. Later on, in the 90s, lush purples and mint greens were added.

Rather than try and recreate just one of these versions of the building, with arrested decay we're proudly celebrating its entire history, in all its many glories, and with all the stories of the past intact.

Want to hear more about arrested decay? Watch the video online at [bit.ly/ArrestedSoho](http://bit.ly/ArrestedSoho)

### More info

Find out more about Soho Theatre Walthamstow by visiting [walthamforest.gov.uk/soho](http://walthamforest.gov.uk/soho)



Layers of history have been revealed as the iconic building is restored



The building's exterior is being carefully renovated



Elaborate ornamentation has been preserved for future generations to enjoy

# Look out, litter louts

Fines for littering and fly-tipping raised in Waltham Forest

**Following the Government's directive to crack down on antisocial behaviour through increased fines, the fine for fly-tipping has risen from £400 to a maximum of £750.**

The Fixed Penalty Notice (FPN) fine for littering will increase from £150 to a maximum of £300, and the fine for breaching the household waste duty of care will go up from £300 to a maximum of £600.

### At a glance: Updated FPN charges

	Government maximum	Previous LBWF charge	New LBWF charge if paid in two weeks	New LBWF charge if not paid in two weeks
<b>Fly-tipping</b>	£1,000	£400	£500	£750
<b>Littering / graffiti</b>	£500	£150	£200	£300
<b>Household waste duty of care</b>	£600	£300	£500	£600

**“No-one wants to see their neighbourhood blighted by other people's rubbish”**

Cllr Clyde Loakes, Deputy Leader and Cabinet Member for the Environment, said: “No-one wants to be hit with a large fine or fee. At the same time, no-one wants to see their neighbourhood blighted by other people's rubbish.

“Happily, there is an easy way to avoid an FPN. Make sure you dispose of your litter and household waste properly and you will not receive a fine, and you and your neighbours will benefit from a clean and tidy local area of which you can be proud.”

If you see a mess in your neighbourhood that needs attention, please let us know at [walthamforest.gov.uk/flytipping](http://walthamforest.gov.uk/flytipping)



# Community Chest unlocked

Discover the organisations passing go with Community Chest Grant funding

**11** new community projects that will help make Waltham Forest a healthier and fairer place to live have been announced, funded by the Waltham Forest Community Chest grant programme.

## Creating Conversations: Good Grief Café

Creating Conversations runs monthly group events encouraging open discussion about grief. They will help people have a better understanding of their own grief and loss, but also help others know how to support someone who is grieving.

“We tend to shy away from these conversations about death and grief and from connecting with those who are grieving. But this can lead to people feeling isolated and misunderstood. This funding will help create supportive spaces where people can have open conversations.” – Debbie, Creating Conversations Director

“There is absolutely no pressure to speak, and it’s enormously helpful to listen to the experiences of others. You will leave feeling better.” – Grief Café participant



### More info

Find out more at [www.creatingconversations.co.uk](http://www.creatingconversations.co.uk)

## The Discovery Space

All residents can join these new community spaces in Walthamstow, Chingford Mount and Highams Park for a few hours a month to speak about whatever they want, boosting mental health and bringing communities together.

“The Discovery Space is warm, welcoming, supportive, and caring. It’s a place where you’re made to feel safe but encouraged to think more reflectively.”

Chris Cratchley, participant



### More info

Find out more at [www.thediscoveryspace.com](http://www.thediscoveryspace.com)

## All Saints Church: Financial Support

This Highams Park church offers professional debt advice at drop-in sessions on Tuesdays, Wednesdays and Thursdays, 11am to 2pm.

“Thanks to this grant we’ve retained our debt advice worker, who works with people across the community through our drop-in service to support their financial situation. We’ve already been able to relieve £195,000 of debt from 56 local people, who have been able to restart their lives.”

Peter, Community Development Manager at All Saints Church



### More info

Find out more at [www.allsaintshp.org.uk/the-hub](http://www.allsaintshp.org.uk/the-hub)

## 11 Successful Projects:

- **Creating Conversations:** Good Death, Good Grief (grief support)
- **Bags of Taste:** Mentored Home Cooking Courses (home cooking support)
- **All Saints Church:** Free Debt Help (financial advice)
- **Waltham Forest Women’s Network:** Empower Women Project (women’s health)
- **Mile Rainbow:** Brain Nutrients for Better Health (dance and wellness)
- **Women’s Decision Group** (domestic violence support)

Find full information about each project at [bit.ly/wfcommunitychest](http://bit.ly/wfcommunitychest)

- **Higham Hill Hub:** Sow, Grow, Thrive (community gardening)
- **Blossom:** Community Access Support and Advice (diverse community support)
- **MBS Wellbeing:** African & Caribbean Community Health Network (wellbeing and information)
- **The Gleaners Café:** Take a Break (food and company)
- **The Discovery Space** (community conversation)

## Are you a Voluntary or Community Sector organisation?

Find out more about Waltham Forest Community Chest grants at [bit.ly/wfcommunitychest](http://bit.ly/wfcommunitychest)



TEAM WALTHAM FOREST  
**SAFE STREETS**

## YOU HAVE THE POWER TO MAKE A CHANGE IN YOUR NEIGHBOURHOOD

Crime and anti-social behaviour in the place where you live can make your life a misery. Don't suffer in silence!

### To report to the Council, go to [walthamforest.gov.uk/reportASB](http://walthamforest.gov.uk/reportASB)

Anti-social behaviour (ASB) should be reported to the Council. It's hard to define ASB but it can include nuisance noise, people being aggressive in public, large groups behaving intimidatingly and more.



### Report crime to the police

If a crime is in progress or someone is in danger, always call **999**. To report a non-emergency crime, you can call **111** or go online at [met.police.uk](http://met.police.uk)



# Waltham Forest



# ADVERTISING

NEWS

## DID YOU KNOW? WALTHAM FOREST NEWS...

IS THE LARGEST NEWSPAPER IN THE BOROUGH

HAS A CIRCULATION OF 120,000 EVERY ISSUE

IS DELIVERED TO EVERY HOUSEHOLD IN WALTHAM FOREST

ADVERTS START FROM JUST £180

**THERE'S NEVER BEEN A BETTER TIME TO ADVERTISE.**

Talk to us for a free consultation on how we can boost your business, contact us now:  
[ADVERTISINGWFN@WALTHAMFOREST.GOV.UK](mailto:ADVERTISINGWFN@WALTHAMFOREST.GOV.UK)



# Making the net work for all

Let's Get Digital sessions help residents save money and time online



Sign up for a session in a library near you

**Let's Get Digital is a programme that offers residents support and advice on using the internet safely and confidently.**

Getting online can offer better access to jobs and education, ways to stay in touch with loved ones, and all kinds of information and services. It can also save you money with great deals for all kinds of products and activities.

**“This is my first session and I want to start coming again and learn more”**

Using the internet has become easier for some residents after they attended a free Let's Get Digital drop-in session at a local library.

Girish attended his first session at Walthamstow Library in January. In just one session, he made some fantastic steps to boost his confidence online. Girish said: “Today I have learnt how to open an email account, how to do online banking, and how to open an online shopping account. This is my first session and I want to start coming again and learn more.”

The sessions are run by Digital Champion volunteers who provide friendly, one-to-one support. Girish added: “The sessions are free. Nowadays IT knowledge is so important, to do online banking, online shopping, and when you're travelling.”

Kenneth also attended a drop-in session at Walthamstow Library, and said: “It's been very helpful. With the tablet I get emails, I can send emails. I can search for different things, if you want to find out anything you can just tap it in and up it will come. I find it very useful.”



## More info

To find out more about face-to-face support to improve your digital skills visit your local library, scan the QR code, or visit [bit.ly/FaceToFaceSupport](https://bit.ly/FaceToFaceSupport)

## Could you save up to £200 a year on internet bills?

**If you receive Universal Credit or other benefits, you could be eligible for a discounted broadband deal, often called a social tariff, from your internet provider that could save you up to £200 a year.**

Contact your internet provider today to find out if you are eligible for a discounted social tariff. It's one of the top tips from our new Get Online for Less campaign. We are also offering advice about:

- How to get a better deal if you are out of contract with your internet provider.
- Understanding your data usage and needs, so that you can save.
- How to access free public Wi-Fi safely.

To find out more and start saving money today visit [bit.ly/GettingOnlineLess](https://bit.ly/GettingOnlineLess)



## Free IT Support

**As well as the Let's Get Digital events, residents all across the borough can learn some top IT tips and tricks from our friendly library staff throughout the week. The sessions are free – but the advice you'll receive is invaluable.**

<b>Lea Bridge Library</b>	Monday	2pm to 3pm
<b>Chingford Library</b>	Monday	2pm to 3pm
<b>Walthamstow Library</b>	Wednesday	3pm to 4pm
<b>Hale End Library</b>	Friday	11am to 12pm
<b>Wood Street Library</b>	Friday	3pm to 4pm
<b>Leytonstone Library</b>	Friday	4pm to 5pm
<b>Higham Hill Library</b>	Friday	4pm to 5pm







# EXTRA HELP WITH DIGITAL PARKING PERMITS



Visitor parking permits and parking vouchers in Waltham Forest are now available 100 per cent digitally via RingGo. They join our other parking products such as resident parking permits, which have only been available digitally since 2012.

We know some people have some questions about the digital permits. We are working closely with RingGo to resolve the issues and concerns you've raised. We have also put extra support in place to offer advice on using the RingGo system and ensure you have the information you need. If you would like a hand, just ask - we're here to help.

## In person

We have arranged some initial drop-in sessions during March and April in several local libraries where our parking officers will be on hand to help guide you through the RingGo process and answer any questions you may have. We'll keep this offer under review. Booking is not necessary - just turn up on the day and a member of staff will be happy to help you:

### Chingford Library:

Monday 18 March	9am - midday and 1pm - 4pm
Thursday 4 April	9am - midday and 1pm - 4pm
Monday 15 April	9am - midday and 1pm - 4pm

### Leyton Library:

Monday 25 March	9am - midday and 1pm - 4pm
Monday 8 April	9am - midday and 1pm - 4pm
Monday 22 April	9am - midday and 1pm - 4pm

### Leytonstone Library:

Tuesday 26 March	9am - midday and 1pm - 4pm
Tuesday 9 April	9am - midday and 1pm - 4pm
Tuesday 23 April	9am - midday and 1pm - 4pm

### Walthamstow Library:

Tuesday 19 March	9am - midday and 1pm - 4pm
Wednesday 3 April	9am - midday and 1pm - 4pm
Wednesday 17 April	9am - midday and 1pm - 4pm

## By phone

Our dedicated helpline is staffed with experts who can help with any queries you may have. Call the team on **0203 092 0112** and pick option three to be connected with a person between 9am and 5pm, Monday to Friday.

When you have registered with RingGo, you can also call the automated line **0203 046 0005** - it's open 24 hours a day, 7 days a week, for you to book permits for yourself or visitors.

## Nominate a family member, friend, or carer

You can nominate someone in your family or a trusted friend / carer to purchase and manage parking permits on your behalf. Just call **0203 092 0112** and pick **option three** to set up your nominated person.



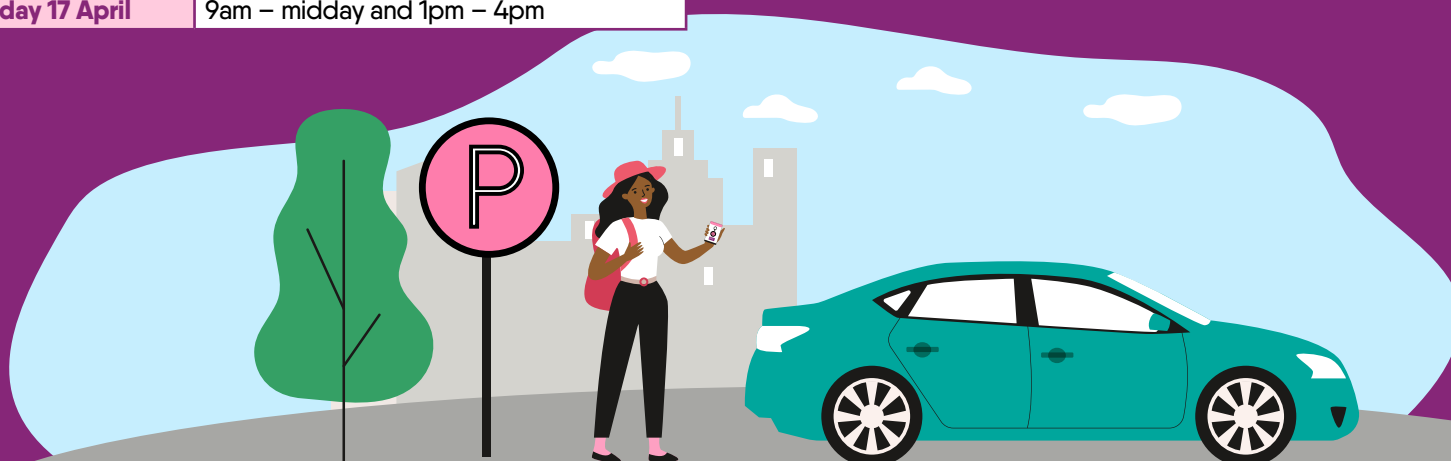
## Need digital training?

You can attend in-person training on using digital devices at a range of local libraries. As well as helping you use the RingGo system, you can also get tips on booking services and keeping in touch with family and friends online. Visit [bit.ly/FaceToFaceSupport](https://bit.ly/FaceToFaceSupport) to see the details of the next session near you.



## Don't forget

- The 90 hours' free visitor parking offer for residents aged over 60 is still available, as is the 30 hours' free parking for households with a newborn baby. Both are now allocated solely online and can be rolled over into subsequent years if not used.
- Any physical permits/vouchers you currently possess such as scratch cards will remain valid indefinitely - there's no rush to use them.







## Working together to prevent housing fraud

### Cracking down on fraudsters to help those in genuine need

**Housing fraud comes at the expense of the council and the wider community. There are many different types, including unlawful subletting, housing application fraud, wrongful succession, and abandonment.**

Some cases occur when family or friends try to help each other out by bypassing application processes or providing misleading information. Others are deliberate and committed purely for profit.

In April 2023, a report by the Tenancy Fraud Forum and Fraud Advisory Panel estimated that 148,000 social housing homes in England are fraudulently occupied. This puts a huge strain on councils, leaving many people on lengthy

waiting lists. It also increases the risks of homelessness because homes are not available to people who need them.

Between April and November 2023, the council recovered 31 properties where there is an allegation of tenancy fraud. A further 54 properties are awaiting civil legal court action, 14 properties are awaiting eviction and we refused six housing succession applications. The CAFT also directly stopped six Right to Buy applications after investigations, adding up to a total to £767,400 in maximum discount savings.

We caught up with Sally\* who was in temporary accommodation in Enfield but is now a tenant of a property

that had been occupied fraudulently.

Sally said: "Living back in Waltham Forest makes a big difference to our lives. My rent is now more affordable, and I can help my mum, who lives nearby. And my daughter is happy to have a permanent home."

.....  
**The council has recovered 31 properties where there is an allegation of tenancy fraud since April 2023**  
.....

Cllr Ahsan Khan, Deputy Leader and Cabinet Member for Housing and Regeneration, said: "Waltham Forest Council takes allegations of fraud



Cllr Ahsan Khan, Deputy Leader and Cabinet Member for Housing and Regeneration

extremely seriously and is committed to preventing, detecting and thoroughly investigating any fraud, corruption and dishonesty.

"Combatting housing fraud is high on our agenda, making sure that homes are made available for those

that genuinely need them. These positive outcomes are testament to the hard work of our diligent CAFT and tenancy officers working together to ensure that the people who live in our properties are the lawful tenants."

\*Resident name changed

## Help us stamp out housing fraud

**Every unlawfully sub-let council property deprives a genuine Waltham Forest housing applicant of the chance of a home.**

If you have a genuine suspicion that a council property is being used fraudulently, you can report this anonymously to a member of our Corporate Anti-Fraud Team by using the details below:

- Call our 24-hour fraud hotlines on **020 8496 4299** or **0300 003 1099**
- Email **fraud@walthamforest.gov.uk**

**More info**

[www.walthamforest.gov.uk/reportfraud](http://www.walthamforest.gov.uk/reportfraud)





## Public Notices

### Notice of Setting of Amount of Council Tax

The Council of the London Borough of Waltham Forest as the billing authority for the said borough, GIVES NOTICE, that on 29 February 2024 and in accordance with section 30 (2) of the Local Government Finance Act 1992 it set out an amount of £2,173.72 as the Council Tax for its area which is applicable to dwellings listed in Band D for the chargeable financial year beginning 1 April 2024.

In accordance with section 5 of the Local Government Finance Act 1992 the amount of Council Tax payable in respect of dwellings situated in the borough and listed in different valuation bands is calculated as below:

Band	Range of Value	Council Tax
A	Up to £40,000	£1,449.15
B	£ 40,001 - £ 52,000	£1,690.67
C	£ 52,001 - £ 68,000	£1,932.20
D	£ 68,001 - £ 88,000	£2,173.72
E	£ 88,001 - £120,000	£2,656.77
F	£120,001 - £160,000	£3,139.82
G	£160,001 - £320,000	£3,622.87
H	£320,001 and above	£4,347.44

Information about ways to pay Council Tax can be found on the Council's web site [www.walthamforest.gov.uk/counciltax](http://www.walthamforest.gov.uk/counciltax)

### COUNCIL TAX EMPTY HOMES PREMIUM 2024/2025

The London Borough of Waltham Forest agreed at its full Council meeting on the 29 February 2024 that the Empty Homes Premium, in accordance with Section 11B of the Local Government Finance Act 1992, as amended by Section 79 of the Levelling Up & Regeneration Act 2023, to apply the premium after one year instead of two years. This premium is set at 100% for unoccupied and substantially unfurnished properties and will be charged in addition to the existing standard Council Tax charge. This takes effect from 1 April 2024. Full Council also agreed, in accordance with Section 11B of the Local Government Finance Act 1992 as amended by the Local Government Finance Act 2012 and Rating (Property in Common Occupation) and Council Tax (Empty Dwellings) Act 2018, to remain on dwellings within the whole of the London Borough of Waltham Forest area.

**For properties which have been unoccupied and substantially unfurnished for more than: - Two Years** – The premium is set at 100% and charged in addition to the existing standard council tax charge from 1 April 2019. **Five Years** – The premium is set at 200% and charged in addition to the existing standard Council Tax charge from 1 April 2020. **Ten Years** – The premium is set at 300% and charged in addition to the existing standard Council tax charge from 1 April 2021.

### Council Tax Second Home Premium effective from 1 April 2025

In addition to the above Section 11C of the Local Government Finance Act 1992, as amended by Section 80 of the Levelling Up and Regeneration Act 2023, introduces a new Premium, effective from the 1 April 2025, for properties which are substantially furnished and are occupied periodically. These types are more commonly referred to as 'Second Homes' and the premium will be charged at 100% in addition to the standard Council Tax charge.

Please refer to <https://www.walthamforest.gov.uk/council-tax/empty-homes> for more information.

## Highways

### LONDON BOROUGH OF WALTHAM FOREST

#### ROAD TRAFFIC REGULATION ACT 1984 – SECTION 35

#### PROVISION OF HOUSING ESTATE CAR PARK – ELMSDALE ROAD E17 (T15(24))

#### The Waltham Forest (Housing Estates Car Parks) (No. 1)

### (Amendment No. 35) Order 2024

1. NOTICE IS HEREBY GIVEN that the Council of the London Borough of Waltham Forest on 18th March 2024 made the above-mentioned Order under sections 35 and 124 and Part IV of Schedule 9 to the Road Traffic Regulation Act 1984, as amended.

2. The general effect of the Order will be, in the Elmsdale Road E17 housing estate car park (off-street areas)

## Planning

### LONDON BOROUGH OF WALTHAM FOREST

#### NOTICE OF APPLICATION FOR PLANNING PERMISSION

Town and Country Planning (General Development Procedure) (England) Order 2015

Notice under Article 15

NOTICE IS HEREBY GIVEN that the following application for planning permission has been made to the Council for which additional publicity is required

Application no:	Applicant Name	Location/Location Description:
240280	C/O Agent	491-495 Hale End Road, Chingford, London, E4 9PT

### LONDON BOROUGH OF WALTHAM FOREST

#### Planning (Listed Buildings and Conservation Areas) Act 1990- Section 67

NOTICE IS HEREBY GIVEN that the following application affecting a building within a conservation area has been made to the Council.

Application no:	Applicant Name	Location/Location Description:
240235	C/O Agent	Royal Forest Premier Inn, 4 Rangers Road, Chingford, London, E4 7QH
240538	C/O Agent	34 Forest View, Chingford, London, E4 7AU
240401	C/O Agent	92 Station Road, Chingford, London, E4 7BA

NOTICE IS HEREBY GIVEN that the following application for planning permission has been made to the Council and that the application is accompanied by an Environmental Statement. 30 days

Application no:	Applicant Name	Location/Location Description:
232678	C/O Agent	Lea Bridge Gas Works, 78 Perth Road, Leyton, London, E10 7PB

The applications are available to view on the following website:

<https://builtenvironment.walthamforest.gov.uk/planning/index.html>

Any views you would like to make for the above proposals, must be submitted in writing to the Council within 14 days of the date of this Notice. Due to the number of correspondences received by the Council relating to planning applications, it will not be possible to acknowledge or respond to your correspondences should you submit any. However, all views/comments received are fully considered during the assessment of the planning application. Please note that the planning file, including correspondence received for the application, are open to the public.

Dated this day 18 March 2024

Justin Carr

Assistant Director – Development Management and Building Control  
London Borough of Waltham Forest

located behind nos.26-28 Elmsdale Road, to provide and regulate "at any time" waiting restrictions in the form of a Restricted Zone (no physical yellow line markings on the ground) with the exception of a total of 7 off-street unrestricted parking bays (as signed).

3. These measures will prevent parking and waiting where it could cause an obstruction, particularly to emergency services and refuse collection vehicles.

4. Copies of the Order, which will come into operation from 20th March 2024 and all other relevant documents can be inspected until the expiration of a period of 6 weeks from that date on request by either emailing traffic.

scheme@walthamforest.gov.uk, or visiting the Highways and Traffic Management office (\*by appointment), Low Hall, Argall Avenue, E10 7AS during normal office hours on Mondays to Fridays inclusive, or alternatively documents can be viewed online at: [www.walthamforest.gov.uk/content/road-traffic-schemes-and-consultations](http://www.walthamforest.gov.uk/content/road-traffic-schemes-and-consultations).

5. Any person desiring to question the validity of either of the Order or of any provision contained therein on the

grounds that it is not within the relevant powers of the Road Traffic Regulation Act 1984, or that any of the relevant requirements thereof or of any relevant regulations made thereunder has not been complied with in relation to the Order may, within six weeks of the making of the Order, make application for the purpose to the High Court.

\*For more information please telephone 020 8496 3000, quoting reference Traffic Orders and ref

T15(24) – Elmsdale Road E17

Dated 18th March 2024

Mr. J. Griffin, Director of Neighbourhoods, Traffic Orders, Low Hall, Argall Avenue, London, E10 7AS

### LONDON BOROUGH OF WALTHAM FOREST

#### ROAD TRAFFIC REGULATION ACT 1984 – SECTION 35

#### PROVISION OF HOUSING ESTATE CAR PARK – OAK HILL COURT IG8 (T17(24))

#### The Waltham Forest (Housing Estates Car Parks) (No. 1) (Amendment No. 36) Order 2024

1. NOTICE IS HEREBY GIVEN that the

Council of the London Borough of Waltham Forest on 18th March 2024 made the above-mentioned Order under sections 35 and 124 and Part IV of Schedule 9 to the Road Traffic Regulation Act 1984, as amended.

2. The general effect of the Order will be, in the Oak Hill Court IG8 housing estate car park (off-street areas) to provide and regulate "at any time" waiting restrictions in the form of a Restricted Zone (no physical yellow line markings on the ground) with the exception of a total of 7 off-street unrestricted parking bays (as signed).

3. These measures will prevent parking and waiting where it could cause an obstruction, particularly to emergency services and refuse collection vehicles.

4. Copies of the Order, which will come into operation from 20th March 2024 and all other relevant documents can be inspected until the expiration of a period of 6 weeks from that date on request by either emailing traffic.scheme@walthamforest.gov.uk, or visiting the Highways and Traffic Management office (\*by appointment),



Low Hall, Argall Avenue, E10 7AS during normal office hours on Mondays to Fridays inclusive, or alternatively documents can be viewed online at: [www.walthamforest.gov.uk/content/road-traffic-schemes-and-consultations](http://www.walthamforest.gov.uk/content/road-traffic-schemes-and-consultations).

5. Any person desiring to question the validity of either of the Order or of any provision contained therein on the grounds that it is not within the relevant powers of the Road Traffic Regulation Act 1984, or that any of the relevant requirements thereof or of any relevant regulations made thereunder has not been complied with in relation to the Order may, within six weeks of the making of the Order, make application for the purpose to the High Court.

\*For more information please telephone 020 8496 3000, quoting reference Traffic Orders and ref **T17(24) – Oak Hill Court IG8**  
**Dated 18th March 2024**  
**Mr. J. Griffin, Director of Neighbourhoods, Traffic Orders, Low Hall, Argall Avenue, London, E10 7AS**

## LONDON BOROUGH OF WALTHAM FOREST ROAD TRAFFIC REGULATION ACT 1984 – SECTION 35 PROVISION OF HOUSING ESTATE CAR PARK – CROSBIE HOUSE & NASH HOUSE E17 (T18(24))

The Waltham Forest (Housing Estates Car Parks) (No. 1) (Amendment No. 37) Order 2024

1. **NOTICE IS HEREBY GIVEN** that the Council of the London Borough of Waltham Forest on **18th March 2024** made the above-mentioned Order under sections 35 and 124 and Part IV of Schedule 9 to the Road Traffic Regulation Act 1984, as amended.

2. The general effect of the Order will be, in the Crosbie House & Nash House E17 housing estate car parks (off-street areas), to provide and regulate “at any time” waiting restrictions in the form of a Restricted Zone (no physical yellow line markings on the ground) with the exception of a total of 4 off-street unrestricted parking bays (as signed). These bays will be located:

(a) 1 unrestricted parking bay in the Nash House car park;

(b) 1 unrestricted parking bay in the Crosbie House car park off Church Hill Road; and

(c) 2 unrestricted parking bays in the Crosbie House car park off Prospect Hill.

3. These measures will prevent parking and waiting where it could cause an obstruction, particularly to emergency services and refuse collection vehicles.

4. Copies of the Order, which will come into operation from **20th March 2024** and all other relevant documents can be inspected until the expiration of a period of 6 weeks from that date on request by either emailing [traffic.scheme@walthamforest.gov.uk](mailto:traffic.scheme@walthamforest.gov.uk), or visiting the Highways and Traffic Management office (\*by appointment), Low Hall, Argall Avenue, E10 7AS during normal office hours on Mondays

to Fridays inclusive, or alternatively documents can be viewed online at: [www.walthamforest.gov.uk/content/road-traffic-schemes-and-consultations](http://www.walthamforest.gov.uk/content/road-traffic-schemes-and-consultations).

5. Any person desiring to question the validity of either of the Order or of any provision contained therein on the grounds that it is not within the relevant powers of the Road Traffic Regulation Act 1984, or that any of the relevant requirements thereof or of any relevant regulations made thereunder has not been complied with in relation to the Order may, within six weeks of the making of the Order, make application for the purpose to the High Court.

\*For more information please telephone 020 8496 3000, quoting reference Traffic Orders and ref **T18(24) – Crosbie & Nash House E17**  
**Dated 18th March 2024**  
**Mr. J. Griffin, Director of Neighbourhoods, Traffic Orders, Low Hall, Argall Avenue, London, E10 7AS**

## LONDON BOROUGH OF WALTHAM FOREST ROAD TRAFFIC REGULATION ACT 1984

### BOROUGHWIDE MISCELLANEOUS HIGHWAY WORKS - MINOR BATCH 5 - 2023

### PROVISION AND AMENDMENT OF WAITING RESTRICTIONS, GENERAL PERMIT AND FREE PARKING AND LOADING PLACES AND PROHIBITED ACCESS. MINOR AMENDMENTS TO ORDERS IN RELATION TO PARKING SPACE ALREADY ON THE HIGHWAY, LEFT TURN AND NO ENTRY PROHIBITIONS (T70(23))

The Waltham Forest (Charged-For Parking Places) (Amendment No. 205) Order 2024

The Waltham Forest (Free Parking Places, Loading Places and Waiting, Loading and Stopping Restrictions) (Amendment No. 201) Order 2024  
The Waltham Forest (Prescribed Routes) (William Morris Close E17 and Holmes Avenue E17) (No.1) Traffic Order 2024

1. **NOTICE IS GIVEN** that the Council of the London Borough of Waltham Forest on **18th March 2024** made the above-mentioned Orders under sections 6, 45 and 124 of and Part IV of Schedule 9 to the Road Traffic Regulation Act 1984, as amended.

2. The general effect of the Orders will be in:

(a) **Pinder Road E17 – north-west side – outside No. 60:**

(i) convert a permit parking space to Disabled Persons Parking Place operating “at any time”; and  
(ii) in line with the kerb line remove 4.1 metres of double yellow line “at any time” waiting restrictions in front of the proposed Disabled Persons Parking Place.

(b) **Salop Road E17 (SL) – north-west side – (1) relocate an advisory disabled persons parking place outside Nos. 84 to 88 SL north-eastward by 5.9 metres to outside Nos. 82 and 84 SL and convert that advisory disabled persons space to**

a formalised disabled persons parking place operating “at any time” (2) displace 5.9 metres of permit parking space outside Nos. 82 and 84 SL and (3) extend the double yellow line waiting restrictions outside No. 88 SL north-eastwards by 5.9 metres.

(c) **Davies Lane (DL) E11 – north-east side –** to convert an advisory (non-order) Disabled Persons Parking space outside No. 64 DL to a formalised Disabled Person’s Parking Place (by order) 6.6 metres in length outside Nos. 62 and 64 DL.

(d) **Elm Park Road E10 – north-east side -** outside the flank wall of Nos. 162/168 Lea Bridge Road:

(i) reduce the existing permit parking space to the north-west facing boundary wall of No. 1 Elm Park Road;  
(ii) extend a loading bay by 3.4 metres southeastwardly; and  
(iii) remove and relocate the 2.8 metre double yellow line “at any time” waiting restriction from outside the flank wall of No. 162 Lea Bridge Road south-westwards by 3.4 metres.

(e) **Ardleigh Road E17 (ARD) - east side –** reduce 4.2 metres of permit parking space outside 48 to 50 ARD.

(f) **Winns Avenue E17 (WIN) – north side –**convert 7.5 metres of regulated free parking space adjacent to Nos. 2 and 4 to double yellow line “at any time” waiting restrictions.

(g) Prohibit vehicular traffic (including motorcycles) (except pedal cycles) from entering both arms of **William Morris Close E17** from Holmes Avenue.

3. **FURTHER NOTICE IS HEREBY GIVEN** that the Council under the same RTRA sections mentioned in item 1 on **18th March 2024** made minor amendments/corrections to order map schedules, or created new orders in the following locations:

(a) **Adelaide Road E10 – north-west side –** to amend the permit parking times of operation to match the surrounding zone (LNW) and to designate missing permit parking space outside No. 22 (as proposed and then made in October 2022) (this is an amendment of the traffic order mapped schedule of on-street arrangements only).

(b) To prohibit vehicular traffic, travelling eastbound in **William Morris Close E17**, from turning left into **Holmes Avenue E17** (against the north to south one-way system of Holmes Avenue) (no changes will be made on street apart from the refurbishment of prohibition signs on the highway).

(c) to prohibit all motor vehicles (except pedal cycles) from entering **Holmes Avenue E17** where entry to that road from Forest Road is prohibited by a ‘no-entry’ sign plate (no changes will be made on street).  
(Note: Holmes Avenue is already controlled by a one-way prescribed route order. Any vehicle contravening this order will be subject to a penalty charge notice).

4. Copies of the Orders, which will come into operation from **20th March 2024** and all other relevant documents can be inspected until the expiration of a period of 6 weeks from that date on

request by either emailing [traffic.scheme@walthamforest.gov.uk](mailto:traffic.scheme@walthamforest.gov.uk) or visiting (\*by appointment) the Highways and Traffic Management office, Low Hall, Argall Avenue E10 7AS during normal office hours on Mondays to Fridays inclusive; or alternatively documents can be viewed online at: [www.walthamforest.gov.uk/content/road-traffic-schemes-and-consultations](http://www.walthamforest.gov.uk/content/road-traffic-schemes-and-consultations).

5. Any person desiring to question the validity of either of the Orders or of any provision contained therein on the grounds that it is not within the relevant powers of the Road Traffic Regulation Act 1984, or that any of the relevant requirements thereof or of any relevant regulations made thereunder has not been complied with in relation to the Orders may, within six weeks of the making of the Orders, make application for the purpose to the High Court..

\*For more information, please telephone 020 8496 3000 quoting reference Traffic Orders – **T70(23) – Minor batch 5 – 2023 Boroughwide miscellaneous highway provisions and amendments** and the site location.

**Dated 18th March 2023**

**Mr. J. Griffin, Director of Neighbourhoods, Traffic Orders, Low Hall, Argall Avenue, London, E10 7AS**

## LONDON BOROUGH OF WALTHAM FOREST

### OFF-STREET PARKING – COUNCIL STAFF GREEN PLEDGE PARKING

The Waltham Forest (Off-Street Parking Places) (Amendment No. 23) Traffic Order 2024

1. **NOTICE IS HEREBY GIVEN** that the Council of the London Borough of Waltham Forest on **18th March 2024** made the above-mentioned Orders under sections 35 and 124 of and Part IV of Schedule 9 to the Road Traffic Regulation Act 1984.

2. The general effect of the Order will be to alter the maximum number of days Council Staff must commit to using their vehicles to two times per week to qualify for the Green Pledge staff permit for use within off street parking places in the London Borough of Waltham Forest, bringing the Order in line with the way in which the scheme currently operates.

3. Copies of the Orders, which will come into operation from **18th March 2024** and all other relevant documents can be inspected until the expiration of a period of 6 weeks from that date on request by either emailing [traffic.scheme@walthamforest.gov.uk](mailto:traffic.scheme@walthamforest.gov.uk) or visiting (\*by appointment) the Highways and Traffic Management office, Low Hall, Argall Avenue E10 7AS during normal office hours on Mondays to Fridays inclusive; or alternatively documents can be viewed online at: [www.walthamforest.gov.uk/content/road-traffic-schemes-and-consultations](http://www.walthamforest.gov.uk/content/road-traffic-schemes-and-consultations).

4. Any person desiring to question the validity of either of the Orders or of any provision contained therein on the grounds that it is not within the relevant powers of the Road Traffic Regulation Act 1984, or that any of the relevant

requirements thereof or of any relevant regulations made thereunder has not been complied with in relation to the Orders may, within six weeks of the making of the Orders, make application for the purpose to the High Court..

\*For more information please telephone 020 8496 3000 quoting reference **Traffic Orders – T72b(23) – Staff Parking Permit Green Travel Pledge**.

**Dated 18th March 2024**

**Mr. J. Griffin, Director of Neighbourhoods, Traffic Orders, Low Hall, Argall Avenue, London, E10 7AS**

## LONDON BOROUGH OF WALTHAM FOREST

### ROAD TRAFFIC REGULATION ACT 1984 - SECTION 14(1)

### THE WALTHAM FOREST (VARIOUS ROADS) (STRUCTURAL PROGRAMME) (VARIOUS MEASURES) (NO. 1) ORDER 2024 (TT7b(24))

The Council of the London Borough of Waltham Forest **HEREBY GIVES NOTICE** that it intends on making an Order to enable highway maintenance and lining works to be carried out in a safe and efficient manner.

The general effect of the Order would be, only at such times and to such extent as regulatory signs are displayed, to prohibit vehicles (except works vehicles) from entering, proceeding, waiting or loading for any purpose, at any time, in: (a) Cann Hall Ward: **Wragby Road E11**; (b) Grove Green Ward: **Cheneys Road E11**; and (c) Forest Ward: **Nottingham Road E10**.

Whilst the order is in operation no person shall cause or permit any vehicle to enter, proceed, wait or load for any purpose, at any time, within 30 metres of the junction of any road adjoining the roads or sections of roads contained in paragraph 2 above.

Whilst works are being carried out in any roads mentioned in paragraph 2 the one-way workings / no entry prohibitions for those sections of roads, or in any road adjoining those said sections of roads mentioned in paragraph 2 will be suspended.

Vehicles waiting or loading in disregard of this Order would be removed.

The prohibitions mentioned above would not apply in relation to any vehicle being used: (a) in connection with the said works; or (b) for ambulance, fire brigade or police purposes.

The Order would come into operation on **4th April 2024** and would be valid for a maximum period of 18 months or until the works are completed, whichever is the sooner.

*NOTE: These works would not be carried out simultaneously in all roads but in a sequence as directed by the Council. Signage will be placed in advance of any works in the roads mentioned in paragraph 2 which would give more specific details on the exact dates of the prohibitions, effects of any temporary traffic management and diversion routes as necessary for traffic.*

**Dated 18th March 2024, Mr J Griffin, Director of Neighbourhoods, Traffic Orders, Low Hall, Argall Avenue, London, E10 7AS**



### LONDON BOROUGH OF WALTHAM FOREST

#### ROAD TRAFFIC REGULATION ACT 1984 - SECTION 14(1)

##### THE WALTHAM FOREST (THAMES WATER NEW WATER SUPPLY LINE) (VARIOUS ROADS) (TEMPORARY PROHIBITION OF TRAFFIC) (NO. 1) ORDER 2024

The Council of the London Borough of Waltham Forest (the Council) **HEREBY GIVES NOTICE** that on **18th March 2024** it made an Order to allow for the installation of new water supply lines to be carried out in a safe and efficient manner in various roads within the said borough.

The general effect of the Order will be, only at such times and to such extent as regulatory signs are displayed, to prohibit vehicles (except work vehicles) from entering, proceeding, waiting or loading for any purpose, at any time, in -

(a) **Low Hall Lane E17** – between its junction with Markhouse Road E17 and a point 10 metres south-westward from the said junction.

(b) **Station Road E17** – between the common boundaries of Nos. 10/12 and of Nos. 20/22;

(c) **The Drive E17** (east to west arm) – between its junction with Vine Street E17 and the western boundary of Gaitskell House; and

(d) **Winchester Road E4** – between the common boundary of Nos. 42/44 and the flank wall of No. 66.

Whilst the prohibitions referred to in paragraph 2 above remain in force, advance warning signage and alternative routes for traffic shall be in place.

Vehicles waiting or loading in disregard of this Order would be removed.

The prohibitions mentioned above would not apply in relation to any vehicle being used:

(a) in connection with the said works; or

(b) for ambulance, fire brigade or police purposes (if the works allow).

The Order will come into operation on **2nd April 2024** for a maximum period of 7 months or until the works are completed, whichever is the sooner.

NOTE: These works would not be carried out simultaneously in all roads. The works at each site are expected to be completed within 8 days, however, the Order has been extended to allow for any contingencies. (Ref: TT10(24))  
**Dated 18th March 2024**

**Mr. J. Griffin, Director of Neighbourhoods, Traffic Orders, Low Hall, Argall Avenue, London, E10 7AS**

### LONDON BOROUGH OF WALTHAM FOREST

#### ROAD TRAFFIC REGULATION ACT 1984 - SECTION 14(1)

##### THE WALTHAM FOREST (THAMES WATER REPAIR WORKS) (VARIOUS ROADS) (TEMPORARY PROHIBITION OF TRAFFIC) (NO. 1) ORDER 2024

The Council of the London Borough of Waltham Forest (the Council) **HEREBY GIVES NOTICE** that on **18th March 2024** it made an Order to allow for the repair of Thames Water apparatus to be carried out in a safe and efficient

manner in various roads within the said borough.

The general effect of the Order will be, only at such times and to such extent as regulatory signs are displayed, to prohibit vehicles from:

(a) entering, proceeding, waiting or loading for any purpose, at any time, in the roads or parts of roads mentioned in the Schedule to this notice;

(b) entering into **Morley Avenue E4** through the eastern arm of The Hale E4 for any purpose, at any time.

(c) waiting or loading along the northern kerb line of **The Ridgeway E4** (TRW) between its junction with St Egberts Way E4 and a point 42 metres south-westward from the said junction;

(d) waiting or loading along the eastern kerb line of **St Egberts Way E4** between the southeast facing wall of Ellen Court TRW and a point 33 metres northwest of that said facing wall;

Whilst the prohibitions referred to in paragraph 2 above remain in force, advance warning signage and alternative routes for traffic shall be in place.

Vehicles waiting or loading in disregard of this Order would be removed.

The prohibitions mentioned above would not apply in relation to any vehicle being used:

(a) in connection with the said works; or

(b) for ambulance, fire brigade or police purposes (if the works allow).

The Order will come into operation on **18th March 2024** for a maximum period of 7 months or until the works are completed, whichever is the sooner.  
NOTE: These works would not be carried out simultaneously in all roads but as directed by the Council. Signage will be placed in advance of any works in the roads mentioned in this notice which would give more specific details on the exact dates of the prohibitions, effects of any temporary traffic management and diversion routes as necessary. The duration of the works at each site varies (see schedule), however, the Order has been extended to allow for any contingencies. (Ref: TT14(24))

**Dated 18th March 2024**

**Mr. J. Griffin, Director of Neighbourhoods, Traffic Orders, Low Hall, Argall Avenue, London, E10 7AS**

#### SCHEDULE

##### E4 Roads

**Morley Avenue** – between the common boundaries of Nos. 11/13 and of Nos. 17/19 (up to 15 days);

**St Egberts Way** (east side) – between the southeast facing wall of Ellen Court TRW and a point 18 metres southeastward from it (up to 3 days); and

**The Ridgeway service road** – between its junction with St Egberts Way and the southwest facing wall of Ellen Court TRW (up to 1 day).

##### E10 Road

**Grange Park Road (north of Church Road, west side)** – between its junction with Church Road and a point 20 metres northwestward from the said junction (up to 3 days).

### LONDON BOROUGH OF WALTHAM FOREST

#### ROAD TRAFFIC REGULATION ACT 1984 - SECTION 14(1)

##### THE WALTHAM FOREST (CONSTRUCTION VEHICLE ACCESS)

### (VARIOUS ROADS) (TEMPORARY RESTRICTIONS) (NO.1) ORDER 2024

The Council of the London Borough of Waltham Forest **HEREBY GIVES NOTICE** that on **18th March 2024** it made an Order to allow safe access, egress and loading provision for construction vehicles in various roads within the said borough in association with development works off the highway.

The general effect of the Order will be, only at such times and to such extent as regulatory signs are displayed or, where applicable, covered, to – prohibit vehicles (except work vehicles) from entering, proceeding, waiting or loading, for any purpose, “at any time” in,

(a) **Aldriche Way E4** – between the northern kerb line of the access way to the car park adjacent to Nos. 123 to 137 and a point 40 metres northwest from that said kerb line;

(b) **Cherrydown Avenue E4** – between its junction with Albert Crescent E4 and the flank wall of No. 11; and

(c) **Parkstone Road E17** – the entire length of its east – west arm.

Whilst the prohibitions referred to in item 2 above remain in force, advance warning signage and alternative routes for traffic shall be in place.

Vehicles waiting, loading, stopping or parking in disregard of this Order would be removed.

The prohibitions mentioned above would not apply in relation to any vehicle being used for ambulance, fire brigade or police purposes (if the works allow).

The Order will come into operation on **1st April 2024** for a maximum period of 7 months or until the works are completed, whichever is the sooner.

NOTE: The works would not be carried out simultaneously in all roads. Signage placed in advance of any works in the above-mentioned roads would give more specific details on the exact dates of the prohibitions and of any temporary traffic management as necessary. The duration of works at Aldriche Way E4 and Parkstone Road E17 is expected to be 1 day. The works at Cherrydown Avenue E4 is planned to occur over 3 non-consecutive days, during which the order would come into operation at this site. The validity of the order has been extended to allow for any contingencies. (Ref: TT15(24))

**Dated 18th March 2024**

**Mr. J. Griffin, Director of Neighbourhoods, Traffic Orders, Low Hall, Argall Avenue, London, E10 7AS**

### LONDON BOROUGH OF WALTHAM FOREST

#### ROAD TRAFFIC REGULATION ACT 1984 - SECTION 14(1)

##### THE WALTHAM FOREST (UKPN ELECTRICITY SUPPLY INSTALLATION) (NESTA ROAD IG8 AND LARKSHALL ROAD E4) (TEMPORARY PROHIBITION OF TRAFFIC) (NO. 1) ORDER 2024

The Council of the London Borough of Waltham Forest **HEREBY GIVES NOTICE** that it intends on making an Order to allow for the installation of electricity supply lines to be carried out in a safe and efficient manner by UK Power Networks (UKPN) in multiple roads within the said borough.

The general effect of the Order would be, only at such times and to such

extent as regulatory signs are displayed, to prohibit vehicles (except work vehicles) from entering, proceeding, waiting or loading for any purpose, at “any time”, in,

i) **Nesta Road IG8** – between the common boundaries of Nos. 5/7 and of Nos. 15/17; and

ii) **Larkshall Road E4 (access road)** – between the flank wall of No. 97 and its junction with Endlebury Road.

Vehicles waiting or loading in disregard of this Order would be removed.

The restrictions and prohibitions mentioned above would not apply in relation to any vehicle being used:

(a) in connection with the said works; or

(b) for ambulance, fire brigade or police purposes in an emergency.

The Order would come into operation on **15th April 2024** for a maximum period of 7 months, or until the works are completed, whichever is the sooner.

NOTE: These works would not be carried out simultaneously in all roads. Signage will be placed in advance of any works which would give more specific details on the exact dates of the prohibitions and the section of the road to which they would apply. The works at each site is expected to be completed within 5 days, however, the Order has been extended to allow for any contingencies. (ref: TT16(24))

**Dated 18th March 2024**

**Mr J Griffin, Director of Neighbourhoods, Traffic Orders, Low Hall, Argall Avenue, London, E10 7AS**

### LONDON BOROUGH OF WALTHAM FOREST

#### EXPERIMENTAL CONVERSION OF CERTAIN ROADS FROM THE LEYTONSTONE EAST (LSE) CPZ INTO A NEWLY FORMED CPZ NAMED LEYTONSTONE STATION (LS) AMENDMENT OF PERMIT ELIGIBILITY OF CERTAIN LSE PERMIT HOLDERS TO LS PERMIT HOLDERS (BASED ON NEW CPZ BOUNDARIES), CONVERSION OF PERMIT PARKING SPACE OUTSIDE GEORGE TOMLINSON SCHOOL TO “AT ANY TIME” WAITING RESTRICTIONS TO ACCOMMODATE PARKLETS ON THE HIGHWAY (ALL E11 STREETS)

1. NOTICE IS HEREBY GIVEN that the London Borough of Waltham Forest (the Council) on **18th March 2024** made: **The Waltham Forest (Charged-For Parking Places) (Amendment No. 204) Experimental Order 2024; and The Waltham Forest (Free Parking Places, Loading Places and Waiting, Loading and Stopping Restrictions) (Amendment No. 200) Experimental Order 2024** under sections 9 and 10 of the Road Traffic Regulation Act 1984. The Orders will come into operation on **29th March 2024** and may continue in force until **28th September 2025** (18 months).

2. The general effect of the experimental Orders will be, -

(a) that the following roads and parts of roads are no longer included within the LSE CPZ but are now included into a new CPZ namely **Leytonstone Station (LS): Burghley Road, Harrington Road, and Vernon Road** from its northernmost extremity to its

#### junction with Harold Road.

(b) to convert permit holder parking places in the roads and parts of roads mentioned in paragraph 2(a) from permit holder parking places for LSE permit holders, to permit holder parking places for **LS permit holders only;**

(c) to provide that the “controlled hours” of the permit parking places and single yellow lines in the LS CPZ will be between **8am and 6.30pm on Mondays to Saturdays inclusive;**

(d) to suspend a permit parking place and a section of single yellow line waiting restrictions outside George Tomlinson school and provide double yellow line “at any time” waiting restrictions to allow for a parklet to be installed on the highway.

(e) provide that the properties eligible to apply for permits in the LS CPZ are specified in **Schedule 1** of this Notice.

3. The Orders will also provide that:

(a) residents’ permits, business permits, charity permits, visitors’ permits, school staff term-time only permits, residents’ foreign vehicle permits and essential user/carers permits may be issued, on payment of the appropriate charge as specified in **Schedule 2** to this Notice, to a person who is the keeper of a passenger vehicle (having 8 passenger seats or less), certain goods carrying vehicles and invalid carriages, providing that in the case of -

(i) a residents’ permit, they are a resident of a property eligible to purchase permits as listed in the relevant Schedule to this Notice and their vehicle is UK registered to that address;

(ii) a foreign vehicles residents’ permit, they are a resident of a property eligible to purchase permits as listed in the relevant Schedule to this Notice and their vehicle is registered outside of the UK;

(iii) a business/charity permit/business visitor’s permit, they have a business in a property eligible to purchase permits as listed in the relevant Schedule to this Notice and that the permit is for a vehicle which is essential to the operation of that business/charity and is used in the purchase and sale of goods or services in connection with that business/charity;

(iv) an essential users/carers permit, they are a doctor or carer who has a surgery in or works in the London Borough of Waltham Forest, or employed by or contracted to the Council, or employed by or contracted to a health authority, or employed by the Metropolitan Police, or employed by the London Fire and Civil Defence Authority, or a company that services fire-fighting appliances and for whom the use of a vehicle is essential to the carrying out of their public service duties in a street or part of a street specified in paragraph 2(a) above;

(v) a school staff term-time only permit, they are a registered member of staff at a primary or secondary school situated in a street or part of a street specified in sub-paragraph 2(a) above, who has a bona fide reason to



drive to that school and who lives or is based outside the Borough.

(b) vehicles displaying any valid permit displaying the letters **LS** may use the permit parking placed provided in the street specified in paragraph 2(a) above;

4. The charges for permits and vehicle class are specified in **Schedule 2** to this Notice.

5. Documents giving more detailed particulars of the experimental Traffic Order and other measures can be inspected on request by either emailing traffic.scheme@walthamforest.gov.uk, or visiting the Highways and Traffic Management office, Low Hall, Argall Avenue E10 7AS during normal office hours on Mondays to Fridays inclusive (\*by appointment); from **18th March 2024**; or alternatively documents can be viewed online at: www.walthamforest.gov.uk/content/road-traffic-schemes-and-consultations.

6. Where it appears necessary for certain purposes, an authorised officer of the Council may, in pursuance of section 10(2) of the Road Traffic Regulation Act 1984, modify or suspend any provision of the experimental Traffic Orders while they are in force.

7. The Council will be considering in due course whether the provisions of the experimental Orders should be continued in force indefinitely by means of permanent Orders made under sections 6, 45, 46 and 124 of and Part IV of Schedule 9 to the Road Traffic Regulation Act 1984. Any person may object to the making of the permanent Orders for the purpose of such indefinite continuation within a period of six months beginning with the day on which the experimental Orders come into force or, if the Orders are varied by another Order or modified pursuant to section 10(2) of the 1984 Act, beginning with the day on which the variation or modification or the latest variation or modification came into force. Any such objection must be made in writing and must state the grounds on which it is made and be sent to Traffic Orders, Highways, Low Hall, Argall Avenue, London, E10 7AS, or by emailing: traffic.scheme@walthamforest.gov.uk quoting: **T11(24) – LSE CPZ roads to LS CPZ.**

8. Any objection may be communicated to, or be seen by, other persons who may be affected.

9. If any person wishes to question the validity of any the Orders or of any of their provisions on the grounds that they are not within the powers conferred by the Road Traffic Regulation Act 1984, or that any requirement of that Act or any instrument made under that Act has not been complied with, that person may, within 6 weeks from the date on which the Orders are made, apply for the purpose to the High Court.

**Dated 18th March 2024**

**Mr. J. Griffin, Director of Neighbourhoods, Traffic Orders, Low Hall, Argall Avenue, London, E10 7AS**

\*For more information please telephone 020 8496 3000, quoting reference Traffic Orders and ref **T11(24) – LSE CPZ roads to LS CPZ.**

**SCHEDULE 1** - Properties whose occupiers will be eligible to purchase permits to park in the LS CPZ excepting any such properties restricted from purchasing permits as part of a "car free" development in any of the roads

(\*where no provision in the planning permission was granted for vehicle owners of such development to apply for parking permits to park within the CPZ except for their visitor permits). Residents/Businesses of: **Burghley Road - all, Harrington Road - all, and Vernon Road** Nos. 68 and 70 only.

**SCHEDULE 2** (Permit charges)

	Engine size less than 1550cc registered before 1st March 2001	Engine size more than 1550cc registered before 1st March 2001	C02 emissions less than 100 g/km registered after 1st March 2001	C02 emissions between 101 and 170 g/km registered after 1st March 2001	C02 emissions more than 170 g/km registered after 1st March 2001
Residents' permit - 12 months	£75.00	£205.00	£65.00	£75.00	£205.00
Residents' permit (second vehicle) - 12 months	£200.00	£500.00	£100.00	£200.00	£500.00
Residents' permit (more than two vehicles) - 12 months	£380.00	£765.00	£200.00	£380.00	£765.00
Residents' Motorcycle permit - 12 months	£62.50	£175.00	£46.00	£62.50	£175.00
Residents' permit - 1 month	£65.00	£215.00	£50.00	£65.00	£215.00
Residents' permit foreign vehicle - 6 months	£150.00	£380.00	£90.00	£150.00	£380.00
Business permit - 12 months	£590.00	£930.00	£280.00	£590.00	£930.00
Business permit (second vehicle) - 12 months	£890.00	£1380.00	£430.00	£890.00	£1380.00
Business permit (more than two vehicles) - 12 months	£1260.00	£1850.00	£545.00	£1260.00	£1850.00
Business permit (all zones) - 12 months	£1260.00	£1800.00	£545.00	£1260.00	£1800.00
Business permit (all zones) (second vehicle) - 12 months	£1680.00	£2330.00	£755.00	£1680.00	£2330.00
Business permit (all zones) (more than two vehicles) - 12 months	£2200.00	£3125.00	£1310.00	£2200.00	£3125.00
Business motorcycle permit	£130.00	£190.00	£82.50	£130.00	£190.00
Essential user permit - 12 months	£520.00	£870.00	£235.00	£520.00	£870.00
Charity permit - 12 months	£100.00	£170.00	£60.00	£100.00	£170.00
Charity permit (second vehicle) - 12 months	£155.00	£230.00	£90.00	£155.00	£230.00
Charity permit (more than two vehicles) - 12 months	£215.00	£300.00	£115.00	£215.00	£300.00
Charity permit (all zones) - 12 months	£155.00	£280.00	£105.00	£155.00	£280.00

## Other permits

Business visitor permit –	1 hour: £2.20
All-Zone Business Visitor's Permit –	1 hour: £3.00
Business pool permit (1st permit) –	12 months: £790
Business pool permit (2nd permit) –	12 months: £1400
Business pool permit (3rd permit) –	12 months: £1750
Carers permit (requires qualifying evidence) same as residents' permit	
Charity pool permit (1st permit) –	12 months: £150
Charity pool permit (2nd permit) –	12 months: £220
Charity pool permit (3rd permit) –	12 months: £300
Essential User Permit –	1 month: £165
Essential users pool (multiple vehicles) permit -	12 months: £570
Residents' pool permit (1st permit) –	12 months: £200
Residents' pool permit (2nd permit) –	12 months: £325
Residents' pool permit (3rd permit) –	12 months: £425
Residents' tradespersons permit –	7 days: £60
Residents' tradespersons permit –	28 days: £190
Residents' visitor permits –	1 hour: £1.00p (30 permits per year free to over 60s)
Services charges for change of VRM or change of address: £22.50, for refunds: £27.50 (refunds under £1 not permitted) and lost or stolen permits: £25.	

## LONDON BOROUGH OF WALTHAM FOREST

### ROAD TRAFFIC REGULATION ACT 1984 - SECTION 14(1)

### THE WALTHAM FOREST (THAMES WATER REPAIR AND MAINTENANCE WORKS) (E11 ROADS) (TEMPORARY PROHIBITION OF TRAFFIC) (NO. 1) ORDER 2024

The Council of the London Borough of Waltham Forest (the Council) **HEREBY GIVES NOTICE** that it intends on making an Order to allow for the repair and maintenance of Thames Water apparatus to be carried out in a safe and efficient manner in **E11 roads**.

The general effect of the Order would be, only at such times and to such extent as regulatory signs are displayed, to prohibit vehicles from entering, proceeding, waiting or loading for any purpose, at any time, in the roads or parts of roads mentioned in,

i) **Ashville Road E11** - between the common boundaries of Nos. 94/96 and of Nos. 102/104;

ii) **Dyson Road E11** – between the common boundary of Nos. 17/19 and the western kerb line of the car park access way adjacent to No. 21; and

iii) **Harvey Road E11** – between the western boundary of No.2 and its junction with High Road Leytonstone E11;

Whilst the prohibitions referred to in paragraph 2 above remain in force, advance warning signage and alternative routes for traffic shall be in place. Designated controlled parking spaces situated in the parts of roads affected by the measures set out in paragraph 2 above will be suspended.

Whilst works are being carried out in the parts of roads mentioned in paragraph 2 of this notice, and only at such times and to such extent as regulatory signs are displayed, any one-way working or no-entry prohibition in those roads, or in any roads adjoining any of those roads, will be temporarily suspended.

Vehicles waiting or loading in disregard of this Order would be removed.

The prohibitions mentioned above would not apply in relation to any vehicle being used:

(a) in connection with the said works; or

(b) for ambulance, fire brigade or police purposes (if the works allow).

The Order would come into operation on **22nd April 2024** and would be valid for a maximum period of 6 months or until the works are completed, whichever is the sooner.

*NOTE: These works would not be carried out simultaneously in all roads.*

*Signage will be placed in advance of any works in the roads mentioned in this notice which would give more specific details on the exact dates of the prohibitions, effects of any temporary traffic management and diversion routes as necessary. The works at Ashville Road and Dyson Road are expected to be completed within 1 day. The duration of the work in Harvey Road is expected to be 14 days. The Order has been extended to allow for any contingencies. (Ref: TT17(24))*

**Dated 18th March 2024**

**Mr. J. Griffin, Director of Neighbourhoods, Traffic Orders, Low Hall, Argall Avenue, London, E10 7AS**





# APPLY NOW

Take control of your future



+44 (0) 208 5233 544

info@sgmc.ac.uk

 /monouxcollege

 @monouxcollege

 /monouxcollege

[www.sgmc.ac.uk](http://www.sgmc.ac.uk)



# The way you vote has changed.

Remember to bring photo ID to vote in a polling station.

Some of the photo ID you could use:

✓  
Passport

✓  
Photocard  
Driving  
Licence

✓  
Blue  
Badge

✓  
Freedom Pass  
or Oyster  
60+ Card

✓  
Pass  
Cards

✓  
Biometric  
Immigration  
Cards



Scan the QR code to  
register to vote and check your photo ID

[electoralcommission.org.uk/voterID](https://electoralcommission.org.uk/voterID)

0800 328 0280



# Mayor of London and London Assembly elections are on

Thursday 2 May 2024

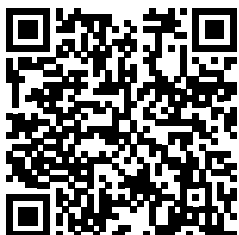
Your vote matters.  
Don't lose it!

REMEMBER TO:

①  
Register  
to vote by  
16 April 2024

②  
Check my  
photo ID

③  
Vote at  
the polling  
station!



Scan the QR code to  
register to vote and check your photo ID

[electoralcommission.org.uk/voterID](https://electoralcommission.org.uk/voterID)

0800 328 0280



Waltham Forest