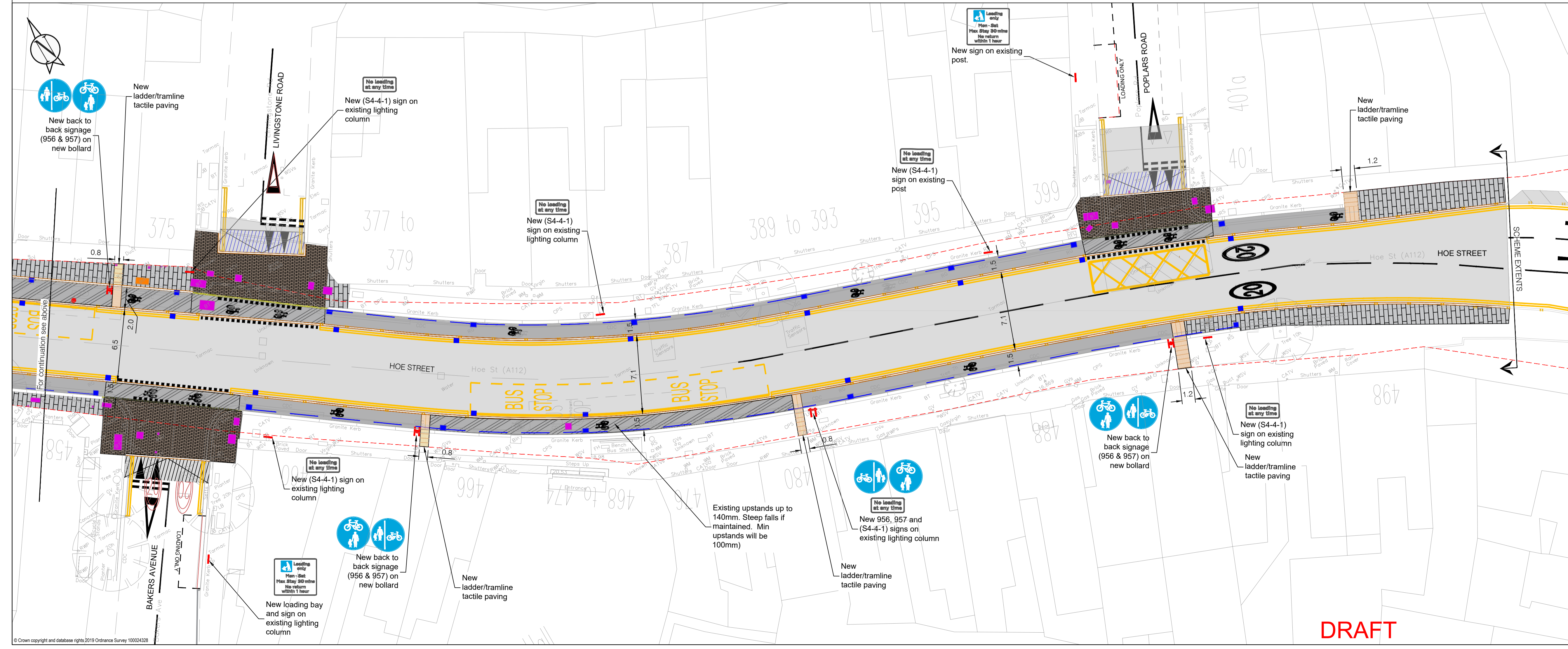


KEY:

- 150 x 300/150mm granite kerbs
- 80 x 180mm granite CYCLE kerbs
- ASP paving
- Granite paving (to match Bakers Arms)
- Blended crossing
- Segregated cycle track
- Segregated cycle track (Flushed Section)
- SuDS gardens
- BB Belisha beacon
- Gully
- Relocated street furniture unless otherwise stated
- Reset service covers to finish levels
- Retention socket for traffic signals
- Rubberised porous surfacing system on tree pits
- Tree
- Sign
- Sign and post
- Asphalt ramp
- Flat top table
- Carriageway resurfacing
- Precast concrete BLISTER tactile paving flags (Red)
- Precast concrete BLISTER tactile paving flags (Buff)
- Precast concrete CYCLEWAY (ladder/tramline) tactile paving flags (Buff)

NOTES:

- All dimensions are in metres unless otherwise specified.
- Do not scale from this drawing, use printed dimensions only.
- Exact location of proposed furniture to be confirmed on site prior to implementation.
- Drawings to be printed in colour (minimum A3 format) for clarity of materials used.



Rev No.	Date	Description	By

Revision

**HoE Street Phase 2
General Arrangement
Sheet 02**

LONDON BOROUGH OF WALTHAM FOREST

Engineering Design Group
Low Hall
Argill Ave
Leyton
London E10 7AS.

Designed by: JR Drawing Size: A1 Directory/Sub-Directory: Filename: Revision: Date: 24/04/2023 Drawing No: ES-JR-HS P2-100-02

DRAFT