

Waltham Forest **All-Age Autism Strategy**



All-age Autism Strategy

What is the all-age autism strategy?

The **All-age Autism Strategy** is a document that the Council has written with lots of different teams, organisations and local people.



It talks about our plan to be a borough that is easier and more welcoming for autistic people, a borough that is **Autism-Friendly!**



We want to make life better for autistic residents and visitors from all age groups and backgrounds.

To help us write this we asked people that live or work in the borough what they think should happen to make sure the borough is 'autism-friendly'.



We have put all of these ideas together into the strategy and will work hard for the next five years to make these ideas happen.



All-age Autism Strategy

What will it do?

The **All-age Autism Strategy** aims to make sure that we follow these main ideas:

- Autistic people and their families and carers are at the centre of everything we do



- Focus on people's strengths to overcome barriers and thrive in the community



- Guidance, information and support are easily available to all



- The right support at the right time



- Strong awareness/acceptance of autism across the borough



- Autistic people are welcomed in an inclusive borough



- Delivering the actions in the strategy will require action and leadership from all stakeholders



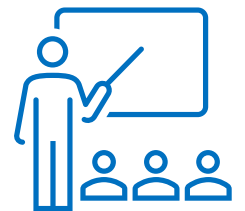
All-age Autism Strategy

What will we focus on?

1. Starting out well: People can find out about autism, recognise autism, and know where to go for help.



2. Fair access to quality education and learning: Children and young people can go to a school that is right for them and achieve their best there.



3. Supporting Families and Networks: Family and friends can get support, get to know other people and find out information they need.



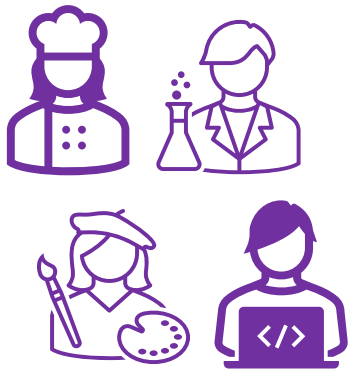
4. Keeping autistic people safe from harm: Everybody feels safe and is safe around the borough, in their homes, and online.



5. Mental Health and Wellbeing: Autistic people are helped to be happy, healthy and can get help from professionals or friends if they need it.



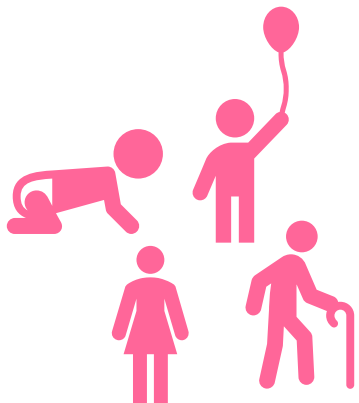
All-age Autism Strategy



6. Employment Opportunities: Those who would like to have a job are helped with this, and there are opportunities they can use to prepare for work or get into a job.



7. Improving access to quality and inclusive local services: For those people who need a bit of extra help from services they can find and use this in a way that suits them.



8. Taking a lifespan approach: All areas will consider people with autism across all different ages and take care at difficult points such as changing schools, leaving home, or getting older.



9. The right home and housing: Autistic people can use housing services easily and feel able to access a home that is right for them.

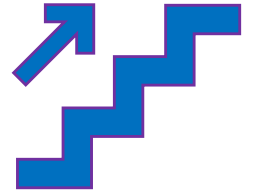


10. Inclusive communities: Everyone in the borough is understanding, friendly, and tries to be helpful and adapt when they need to. Autistic people feel they are part of our community and feel able to live their daily lives easily.

All-age Autism Strategy

How will we do it?

This strategy is just the start of making the borough more autism-friendly. There is lots to do and we need to do it all together.



We have an action plan with things to do in each of the areas listed on page 3. We will check how well these are going regularly and review where we have got to at the end of each year. It is important that residents are part of this and tell us how we are doing.



We will have an autism delivery groups who will lead the work and make sure everyone is doing their bit. This group will report back to other meetings and groups to tell everyone what is happening and what has been done.



Every year we will add new actions to make sure new ideas are part of the work we do.

