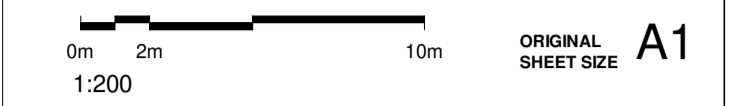


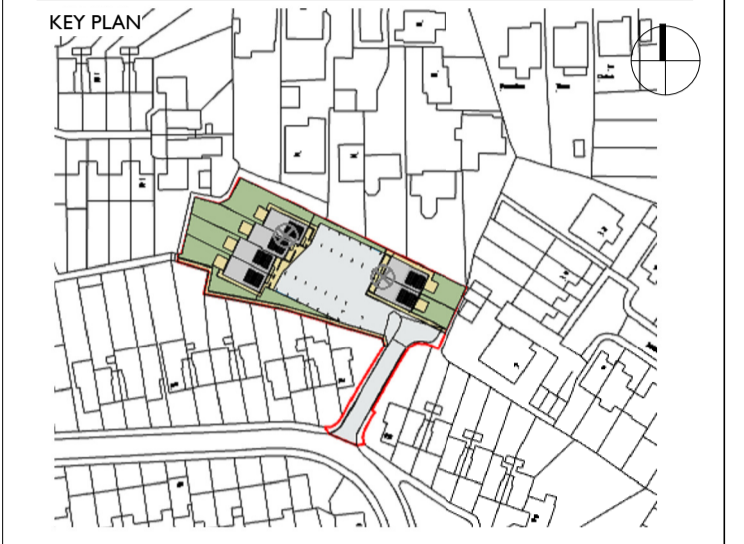
RESPONSIBILITY IS NOT ACCEPTED FOR OTHERS SCALING DIRECTLY FROM THIS DRAWING. DO NOT SCALE FROM THIS DRAWING. USE WRITTEN DIMENSIONS ONLY.



THIS DRAWING IS PRODUCED FOR USE IN THIS PROJECT ONLY AND MAY NOT BE USED FOR ANY OTHER PURPOSE. THE ORIGINATOR ACCEPTS NO LIABILITY FOR THE USE OF THIS DRAWING OTHER THAN THE PURPOSE FOR WHICH IT WAS INTENDED IN CONNECTION WITH THIS PROJECT AS RECORDED IN THE 'PURPOSE FOR ISSUE' AND 'FILE STATUS CODE'.

THIS DRAWING MAY NOT BE REPRODUCED IN ANY FORM WITHOUT PRIOR WRITTEN AGREEMENT.

© CROWN COPYRIGHT AND DATABASE RIGHTS - ORDNANCE SURVEY LICENCE NUMBER 100019340.



NOTES

- Key:
- Site Boundary
 - 1848m² Site Area

Accommodation Schedule

6no. 2 Storey 2B4P House
GIA=88m² each Unit

The Gross Internal Area (GIA) measurements of the houses are 'indicative only' at this stage and subject to change.

Rev	Description	Date
P5	FIFTH ISSUE amended S105 Consultation Drawing	21.12.21

nps group **London - Avocet House**
 Trinity Way
 London
 E4 8TD
 london@nps.co.uk

CLIENT
London Borough of Waltham Forest

PROJECT
Housing Development - Upper Salesbury Drive, Billericay, Essex, CM11 2JJ

TITLE
Section 105 Residents Consultation Proposed Site Plan

SCALE	DISCIPLINE	PROJECT NUMBER
1 : 200	Architecture	S105
DRAWING NUMBER	REV CODE	
NPS-ZZ-00-A-001	P5	
STATUS CODE	PURPOSE OF ISSUE	Drawn by / Approved by
S2	Information	RA / JT
		Checked by /
		STE /



Site Section 105