

# What if...



## Preparing you and your family for emergencies



The Government Standard



# Introduction

- **‘It won’t happen to me...’**
  - Know the risks
- **What can I do?**
  - Get prepared – make a P.L.A.N.

# It won't happen to me...

- What emergencies could affect you?
- What could make you evacuate your home?



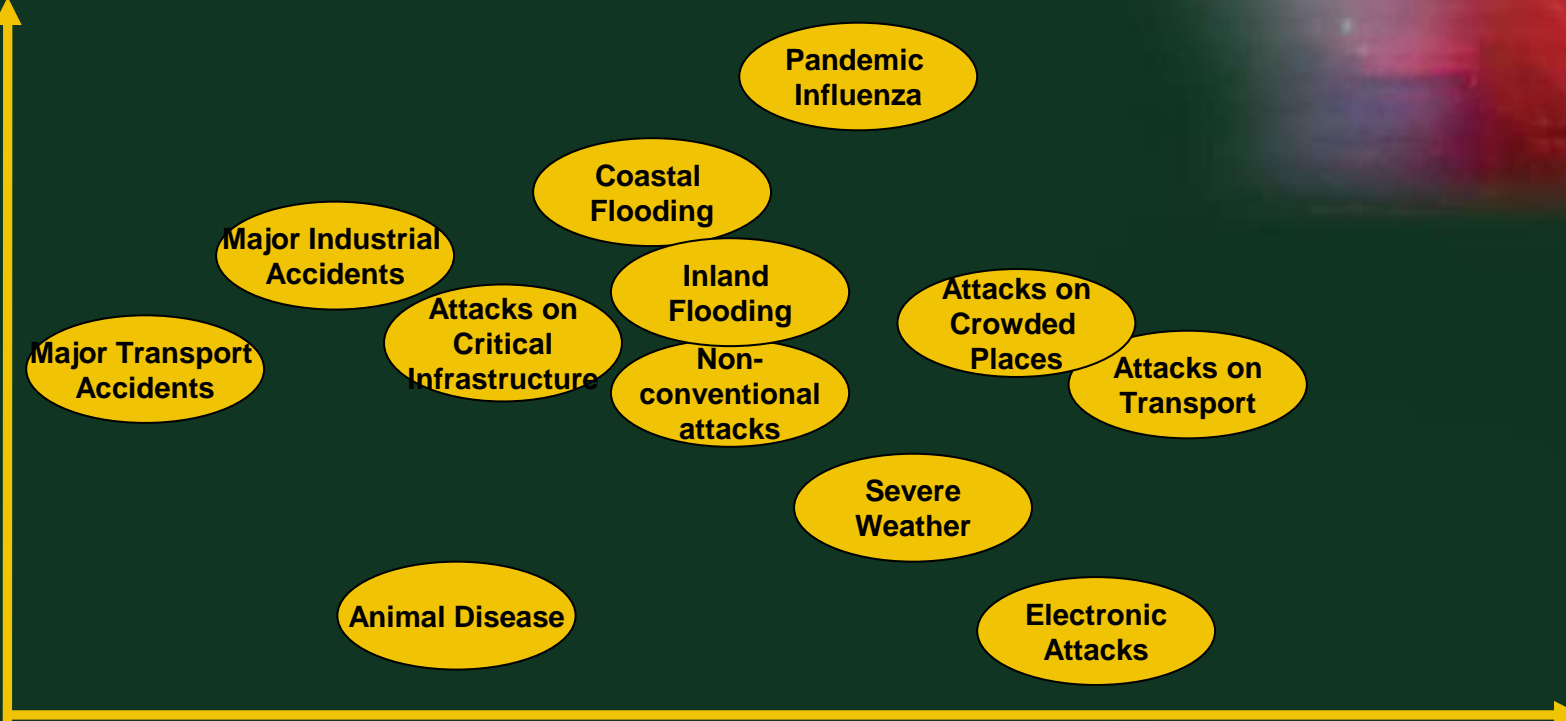
Waltham



# What risks...?

## • National risks

Relative Impact



Relative Likelihood



The Government Standard



# What risks...?

- **Local risks**

- Fires
- Floods
- Acetylene cylinders
- Severe Weather
- Power cuts
- Gas leaks
- Transport accidents



# In Waltham Forest..?

Fire - Leyton High Road, May 2008



CUSTOMER  
SERVICE  
EXCELLENCE

The Government Standard



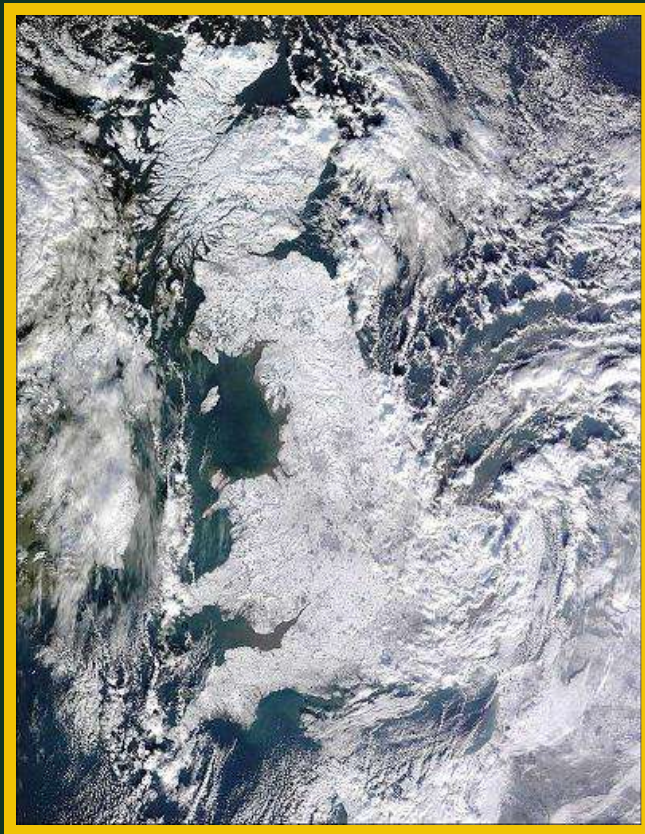
# In Waltham Forest..?

Traffic accident, Walthamstow, January 2009



# In Waltham Forest..?

Severe weather and snow, February (& December) 2009



The Government's Standard





# In Waltham Forest..?

Flooding, Chingford, June 2009



# In Waltham Forest..?

Explosion, Lea Bridge, December 2008



The Government Standard



# In Waltham Forest..?

Fire, John Walsh Tower, Leytonstone, April 2010



The Government Standard



# Others...?



CUSTOMER

# Workshop - What if...

## It's 1am -

- A police officer knocks on your door. There is an emergency and you are in danger
- You have 5 minutes to leave your home
- You will not be able to return for at least 24 hours



- **Who should you tell?**
- **Where will you go?**
- **What will you take with you?**

# What can I do?



**P**repare



**L**ink up



**A**ccommodate



**N**ecessary kit



# Family **P.L.A.N.**



## **P**repare

- Learn as much as you can
- Do you live in a flood plain? Other hazards?
- Escape routes in your house
- Insurance
- How to turn off water, gas & electricity
- Knowing local risks – e.g. flood risk areas
- Enough food and water in case you are stuck at home?

# Family P.L.A.N.



## Link Up

- Meeting points
- Messages with family and friends
- More information in an emergency
  - TV: BBC News 24, regional news
  - Websites: BBC, Council
  - Radio: BBC London, Capital FM, StreetlifeFM
  - Telephone: Council, NHS Direct, Utilities etc
- Important telephone numbers
- ‘ICE’ number in your phone



# Family P.L.A.N.



## Accommodate

- Somewhere to stay if you have to leave your house
- Family and friends
- Hotels (Insurance companies may pay)
- Rest/Evacuation centres run by the Council
- Helping others (neighbours, community who might need help)

# Family P.L.A.N.



## Necessary Kit

- Essential medicine
- Emergency phone numbers
- Identification
- Torch
- Toiletries
- Home and car keys
- Insurance documents
- Radio
- First Aid kit
- Bottled water
- Mobile phone
- Money, bank cards
- Anything you might need



# Your community

## Looking after yourself and others

- Family
- Friends
- Neighbours
- Your community
- The vulnerable

### • Tell people

### • Want to do more?

- Community groups
- British Red Cross

# Your business

- **Business continuity?**

- Plan B
- Why?
- Business continuity plans
- Can you continue your business
- Who do you rely on?
- Doing your part

# More information...

- **Council website**
  - [www.walthamforest.gov.uk](http://www.walthamforest.gov.uk)
- **Civil Contingencies Team**
  - [Civil.contingencies@walthamforest.gov.uk](mailto:Civil.contingencies@walthamforest.gov.uk)
  - 020 8496 4830
- **London Prepared**
  - [www.londonprepared.gov.uk](http://www.londonprepared.gov.uk)
- **British Red Cross**
  - [dcrosby@redcross.org.uk](mailto:dcrosby@redcross.org.uk)



The Government Standard

