

COVID-19 response, outbreak management and data flows

London Coronavirus Response Cell

19.06.2020 Version 1

Setting

Care settings	School and Early Years	Workplace	Health settings	Prison/custodial institutions	Homeless and/or hostel	Community cluster
---------------	------------------------	-----------	-----------------	-------------------------------	------------------------	-------------------

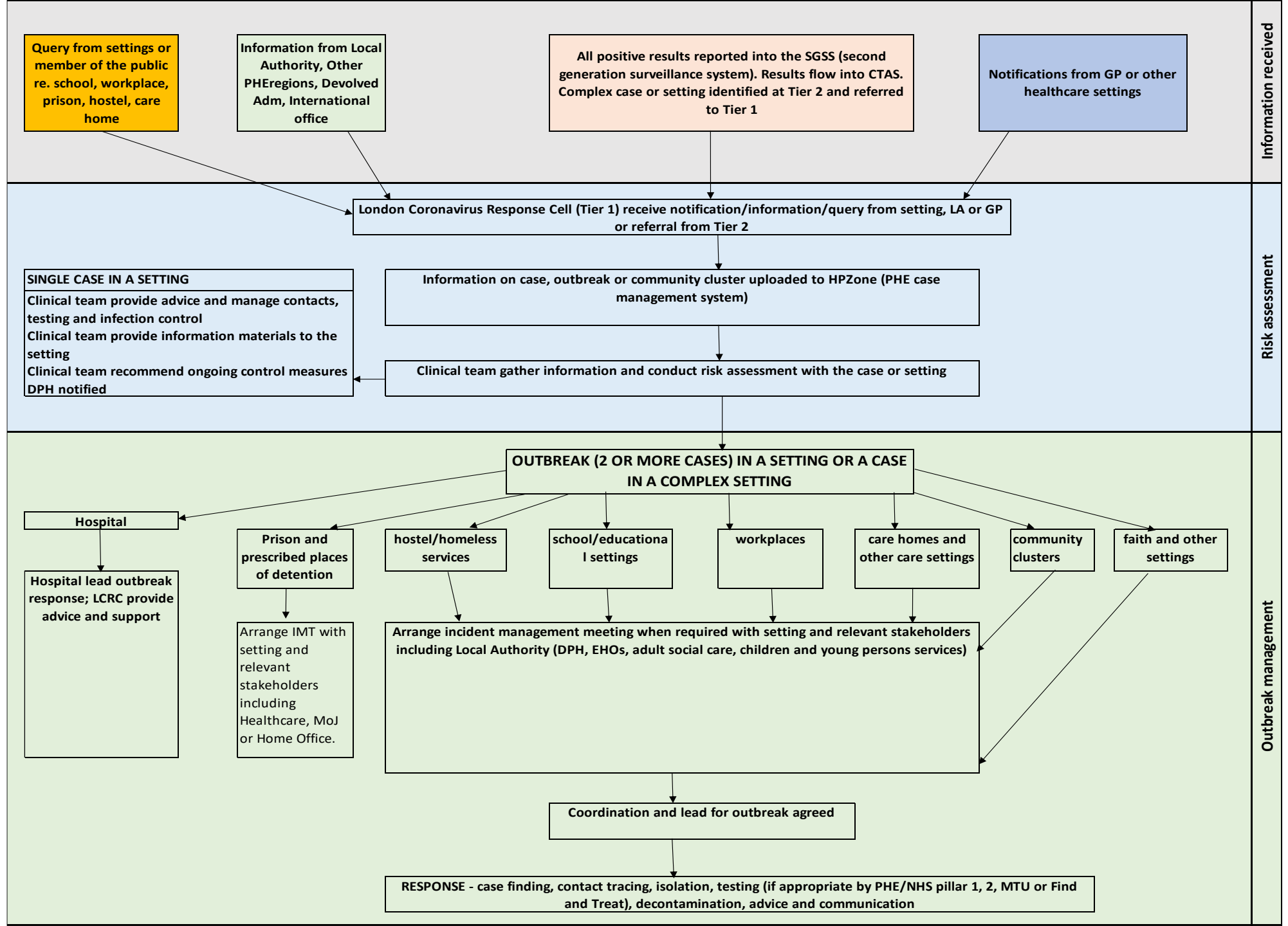
London Coronavirus Response Centre response

- | | |
|--|---|
| <ul style="list-style-type: none"> - Receive notification from Tier 2 - Gather information and undertake a risk assessment with the setting - Provide advice and manage cases and contacts, testing and infection control - Provide information materials to the setting - Recommend ongoing control measures - Convene IMT if required - Provide information to DsPH and advice/recommendations for ongoing support - Communicate and coordinate with other LAs, regions, devolved administrations and internationally as required. | <ul style="list-style-type: none"> - Receive notification from Tier 2 - Support Local Authority in their risk assessment of and response to an identified community cluster |
|--|---|

Local authority response

- | | |
|--|---|
| <ul style="list-style-type: none"> - Prevention work and respond to enquiries - Support wider aspects of the response, such as support for any vulnerable contacts who are required to self-isolate, as per London's 6 Point Plan and national 7 themes of outbreak management plans - Follow-up and support the setting to continue to operate whilst managing the outbreak, including, if required, support with infection prevention and control measures and PPE access - Participate in IMT if convened by LCRC - Organise testing and Mobile Testing Unit deployment as required - Local communications e.g. briefings for Cllrs, local press inquiries, comms with the public - Liaise with CCG, GPs and other healthcare providers to provide ongoing healthcare support to setting | <ul style="list-style-type: none"> - Receive notification from Tier 2 - Convene IMT - Provide support to community which may include translated materials, support to self-isolate, advice and enforcement - Liaise with the local CCG, GPs and other healthcare providers - Local communications (e.g. Cllr briefing, local press inquiries, comms with public) |
|--|---|

Outbreak Management

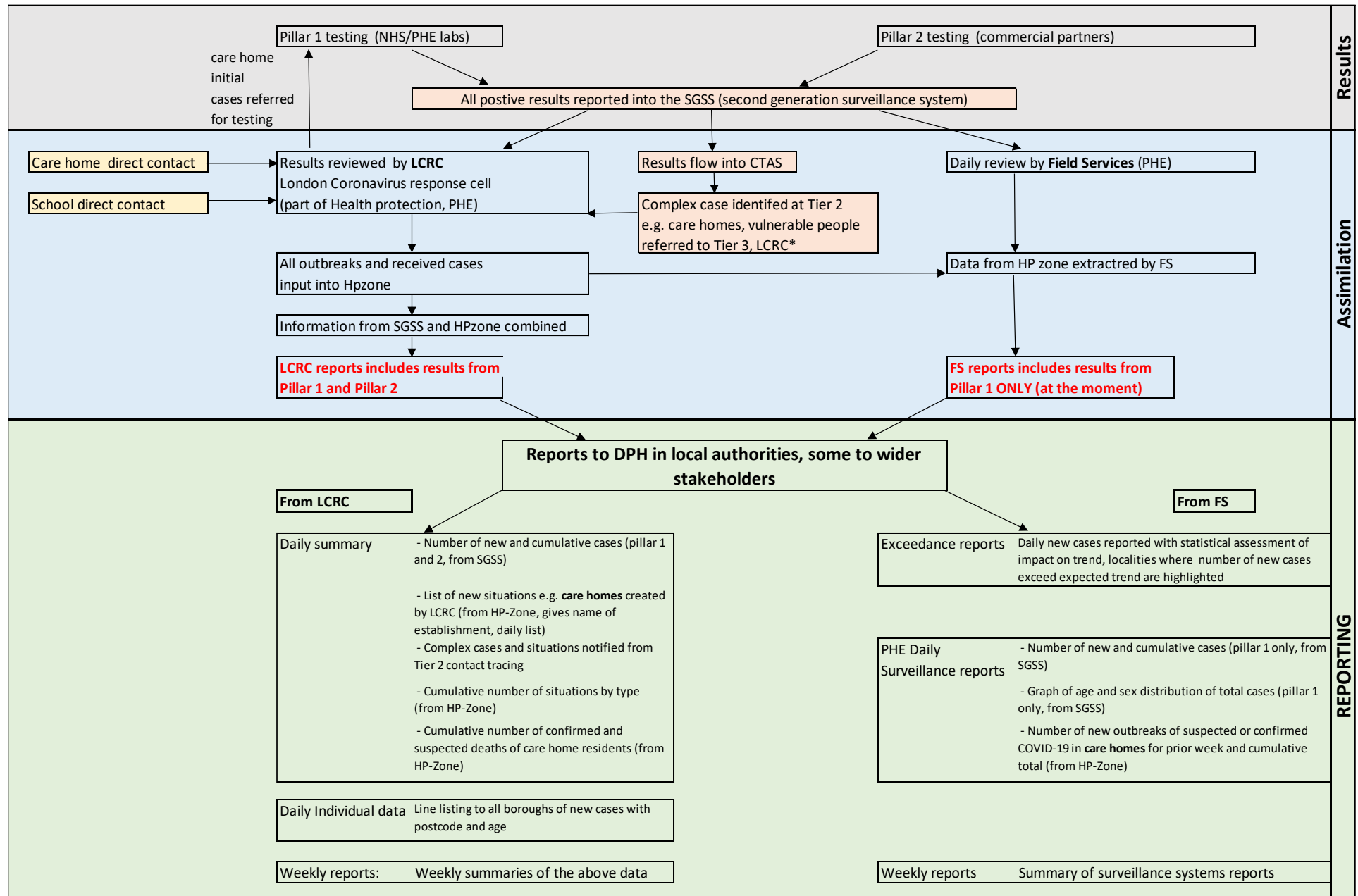


Information received

Risk assessment

Outbreak management

Data flows for COVID-19 cases and situations



* care home residents, schools and connected workplaces are mandatory fields for data entry.
 Care homes, schools and other situations are escalated as per protocol
Postcode and workplace "coincidences" are picked up by CTAS and HP zone and reviewed
Regular surveillance reports reviewed by PHE LCRC/ FS