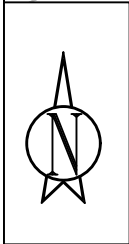


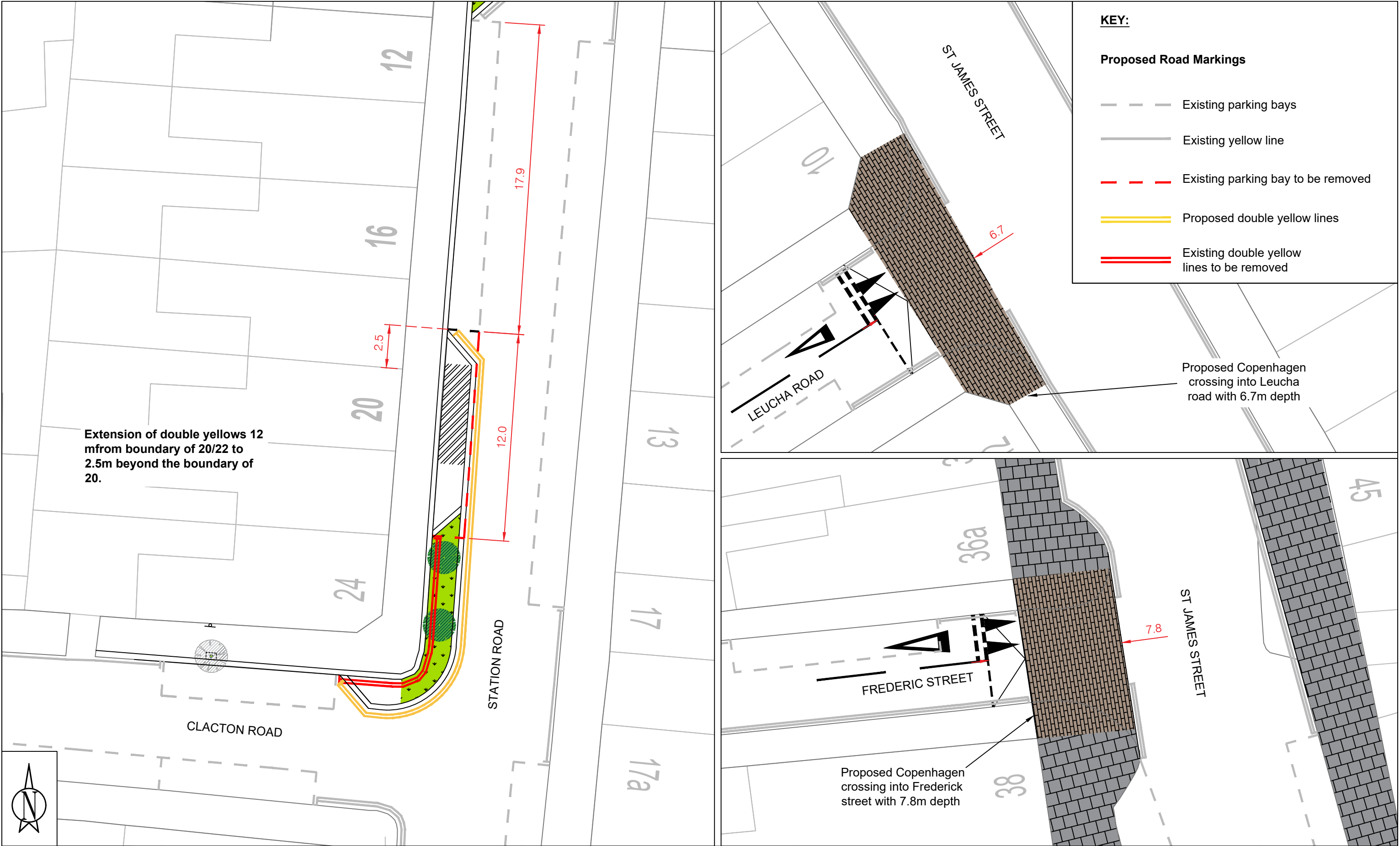
KEY:

Proposed Road Markings

- Existing parking bays
- Existing yellow line
- Existing parking bay to be removed
- Proposed double yellow lines
- Existing double yellow lines to be removed



Drawn By FS	Title Station Road	Notes TMO Plan	Based upon the Ordnance Survey mapping with the permission of the Controller of Her Majestys Stationary Office. C Crown Copyright. Unauthorised reproduction infringes Crown Copyright and may lead to prosecution or Civil Proceedings. London Borough of Waltham Forest. License No. LA086576. 2000		
Drawing No -					
Date DEC_2023					
Scale 1:200					

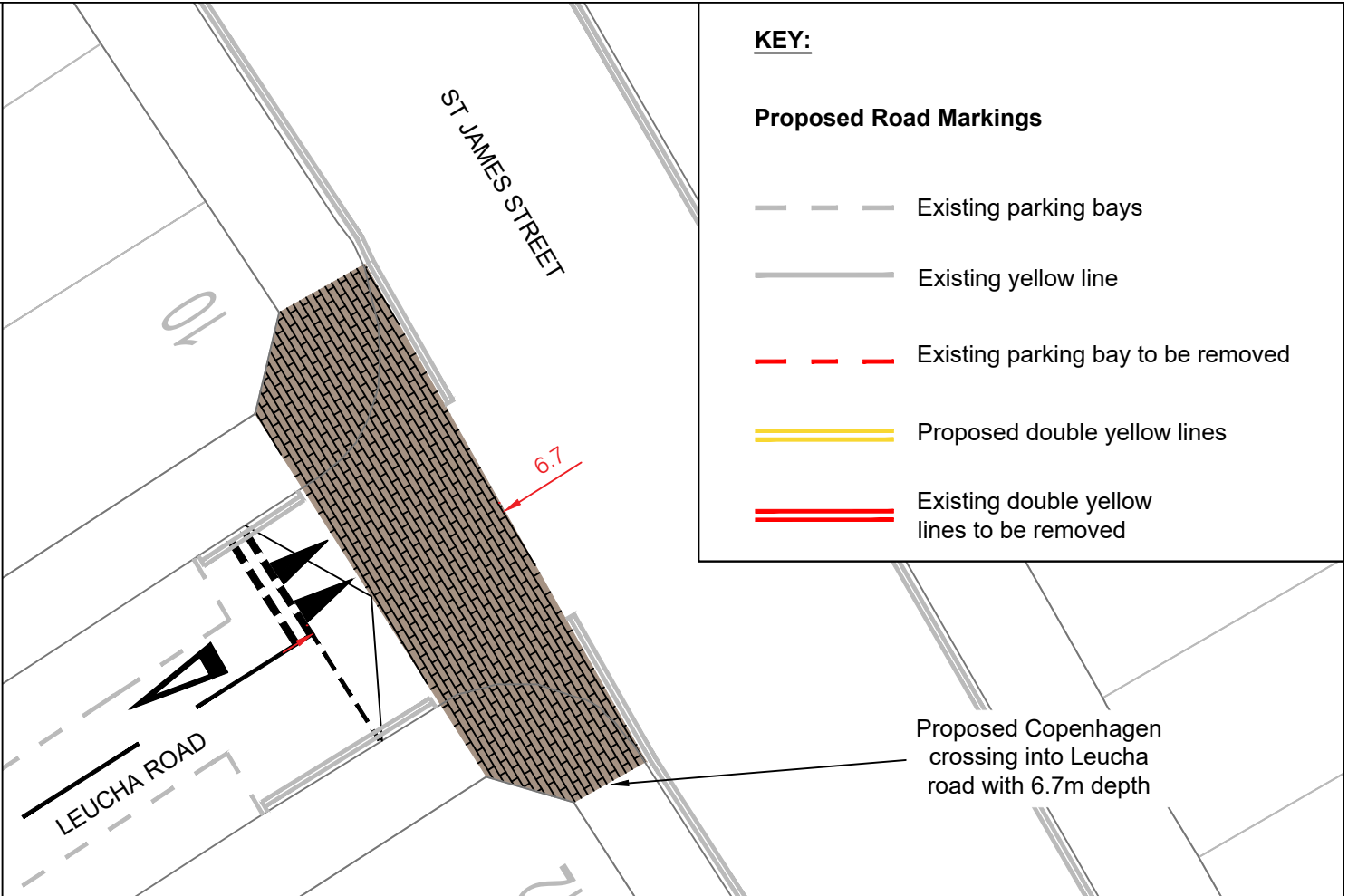


Extension of double yellows 12 m from boundary of 20/22 to 2.5m beyond the boundary of 20.

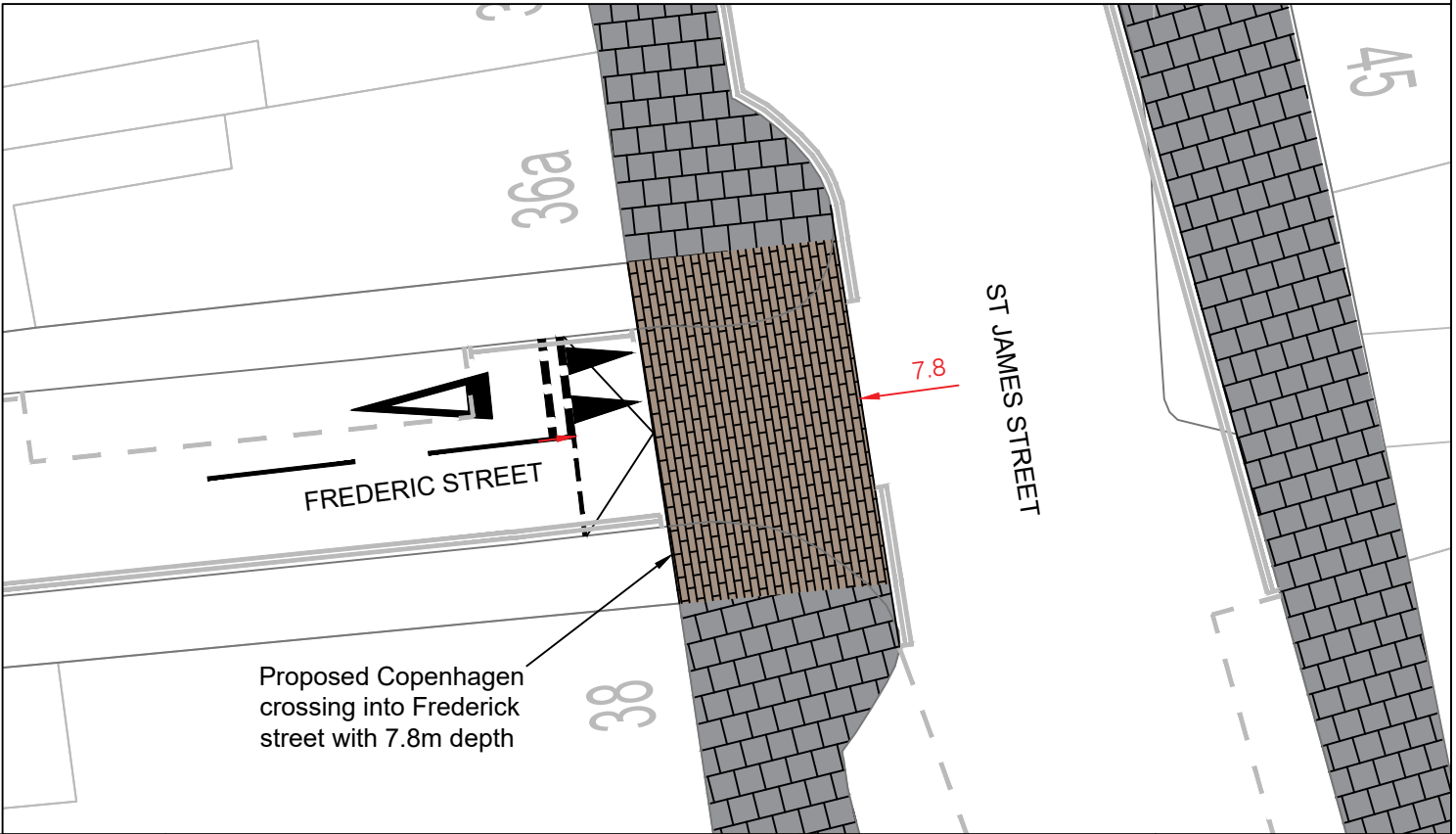
KEY:

Proposed Road Markings

- Existing parking bays
- Existing yellow line
- Existing parking bay to be removed
- Proposed double yellow lines
- Existing double yellow lines to be removed



Proposed Copenhagen crossing into Leucha road with 6.7m depth



Proposed Copenhagen crossing into Frederick street with 7.8m depth

Drawn By FS Drawing No - Date DEC_2023 Scale 1:200	Title Station Road	Notes TMO Plan	Based upon the Ordnance Survey mapping with the permission of the Controller of Her Majestys Stationary Office. C Crown Copyright. Unauthorised reproduction infringes Crown Copyright and may lead to prosecution or Civil Proceedings. London Borough of Waltham Forest. License No. LA086576. 2000	
-------------------------------------------------------------	------------------------------	--------------------------	-------------------------------------------------------------------------------------------------------------------------------------------------------------------------------------------------------------------------------------------------------------------------------------------------------	--

Bulwer Road cushions to humps

