



Blackhorse Road

Ticket Hall

STATION LAYOUT

Not for construction purposes

Produced on behalf of CEG
(Station Systems) by The Building
Control Group (BCG)
London Underground Limited

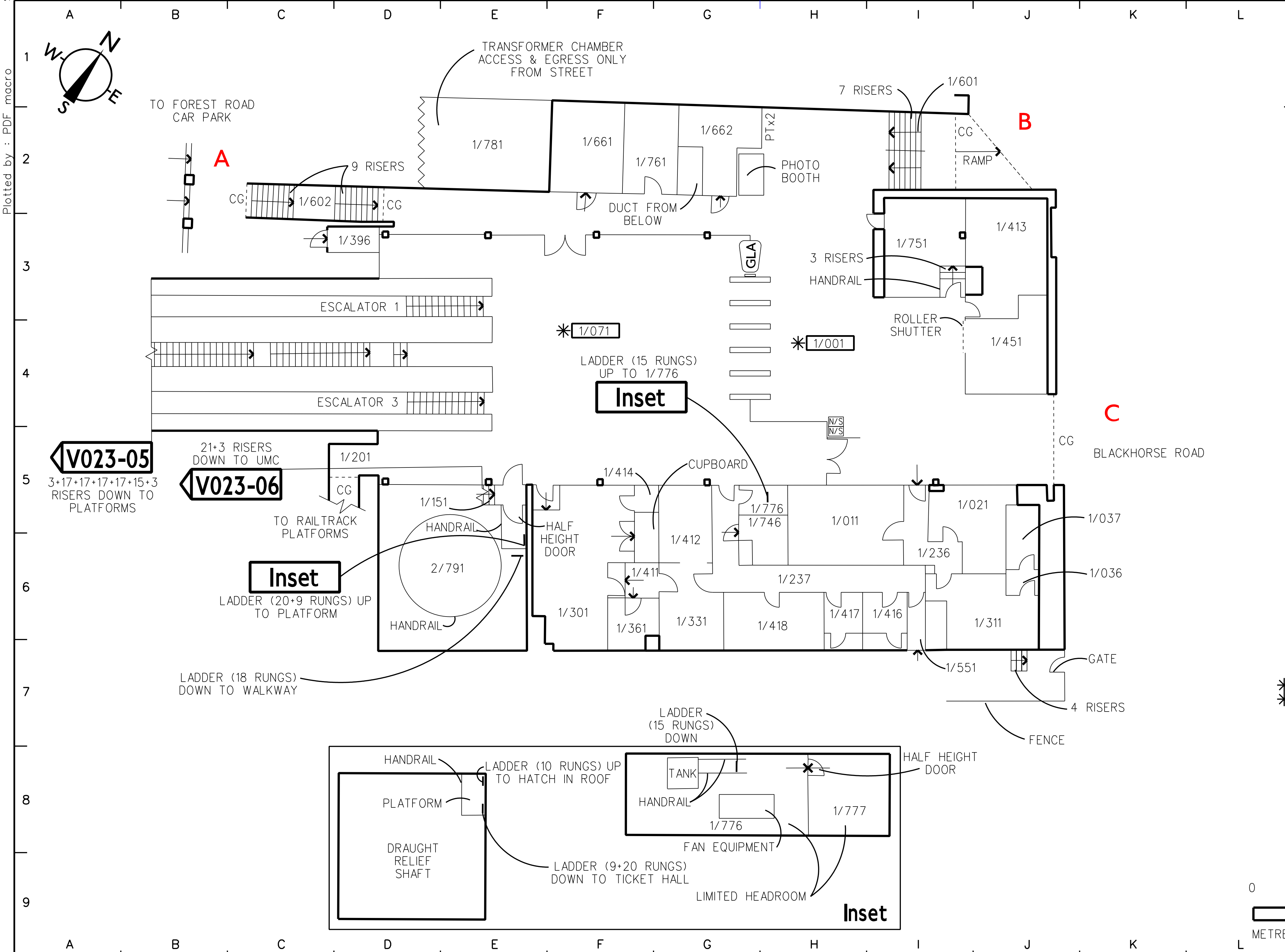
Total of 06 Drawings
V023-01 to 06

Drawing number:
V023-04s

Issue: 09 (2000/01) Revision:
Survey Date: 26:03:01 Date:
Drawn by: MG Drawn by:

Information current at date shown.
For latest information contact BCG
020 7308 4344 (Auto 64344)

If any alterations or additions are needed to these layouts please contact BCG.



Id No.	Description	Notes	Code	Grid Ref
1/011	TICKET OFFICE		011	H5
1/021	POM		021	J5
1/036	LOBBY		081	J6
1/037	TOILET		036	J6
1/151	UMC ACCESS		151	E5
1/201	PASSAGE		201	D5
1/236	LOBBY		081	I6
1/237	LOBBY		081	H6
1/301	OFFICE		301	F6
1/311	MESS ROOM		031	J6
1/331	OFFICE		301	G6
1/361	MESS ROOM		361	F6
1/396	SVC		396	D3
1/411	LOBBY		081	F6
1/412	OFFICE		301	G6
1/413	LOCKER/MESS		316	J3
1/414	SWITCH CUPB'D		661	F5
1/416	TOILET		416	I6
1/417	TOILET		416	H6
1/418	OFFICE		301	H6
1/451	TENANCY		451	J4
1/551	EMERG. EXIT		631	I7
1/601	STAIRS		601	I2
1/602	STAIRS		601	C2
1/661	SWITCH ROOM	E1	661	F2
1/662	SWITCH ROOM	E4	661	G2
1/746	SCR		746	H5
1/751	STN CONT'L RM		751	I3
1/761	STORE		411	F2
1/776	VENT PLANT		776	G8
1/777	D/R ROOM		776	H8
1/781	TRANSFORMER		781	E2
2/791	D/R SHAFT		791	E6
*1/001	BOOKING HALL		001	H3
*1/071	CIRC. AREA		071	F3

Plotted by : PDF_macro

Produced by The Building Control Group, London Underground Limited. Enquiries should be directed to 020 7308 4344 (Auto 64344)